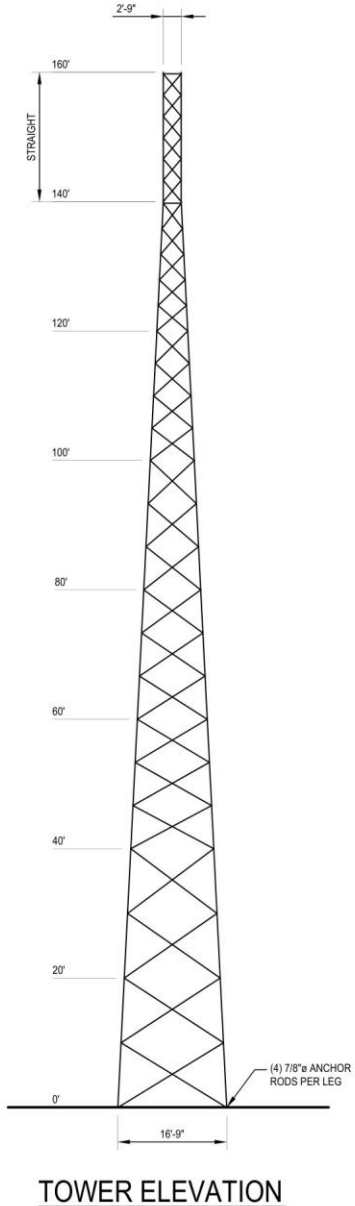
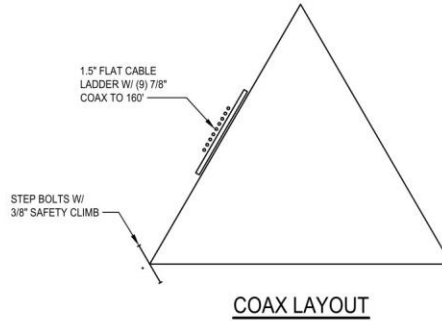


LEGS	5.565" OD x 0.258" THK	4.5" OD x 0.237" THK	4.0" OD x 0.228" THK	3.5" OD x 0.216" THK
DIAGONALS	L3 x 3 x 3/16	L2 1/2 x 2 1/2 x 3/16	L1 3/4 x 1 3/4 x 3/16	L1 1/2 x 1 1/2 x 3/16
HORIZONTALS	(1) 3/4"	N/A	(1) 1/2"	L1 1/2 x 1 1/2 x 3/16
BRACE BOLTS	(4) 7/8"	(1) 5/8"	(4) 3/4"	(4) 5/8"
FLANGE BOLTS	4 BAYS @ 10"	9 BAYS @ 6'-8"	4 BAYS @ 5'	6 BAYS @ 3'-3 1/2"
BAY SPACING	2B	3	4	5
SECTION				



TOWER ELEVATION



COAX LAYOUT


ANTENNA LIST			
ELEV	QTY	ANTENNA	COAX
160'	1	126 SQ FT EPA	(9) 7/8"

THE TABULATED ALLOWABLE EFFECTIVE PROJECTED AREAS (EPA) REPRESENT THE SUMMATION OF THE PROJECTED AREAS OF ALL ANTENNAS, MOUNTS, AND APPURTENANCES MULTIPLIED BY APPROPRIATE DRAG FACTORS. THE ALLOWABLE PROJECTED AREAS ARE ASSUMED TO BE PLACED SYMMETRICALLY ON THE STRUCTURE. LOWER EPA VALUES MAY APPLY FOR OTHER EPA ARRANGEMENTS.

WIND DESIGN DATA	
REFERENCE STANDARD	ANSI/TIA-222-H-2017
CODE	2018 IBC
BASIC WIND SPEED (MPH)	115
ICE THICKNESS (IN)	2.0
ICE WIND SPEED (MPH)	40
SERVICE WIND SPEED (MPH)	60
RISK CATEGORY	II
EXPOSURE CATEGORY	C
MAXIMUM TOPOGRAPHIC FACTOR, K _{ZT}	1.0
SEISMIC DESIGN DATA	
RISK CATEGORY	II
SITE CLASS	D
S _s	2.5
S ₁	1.0

THE SUITABILITY OF THE TABULATED TOWER DESIGN CRITERIA FOR A SPECIFIC APPLICATION MUST BE VERIFIED PRIOR TO INSTALLATION BY THE PURCHASER BASED ON SITE-SPECIFIC DATA AND INTENDED USE OF THE STRUCTURE.

- ALL STEEL SHALL CONFORM TO THE FOLLOWING:
- A. PIPE LEGS: ASTM A500 GR C (46 KSI YIELD POINT MATERIAL)
 - B. ALL OTHER STEEL SHAPES AND PLATES: ASTM A572 GR 50 (50 KSI YIELD POINT MATERIAL)
 - C. STRUCTURAL BOLTS: ASTM A325 TYPE 1 WITH ASTM A563 GRADE DH NUTS
 - D. ANCHOR RODS: ASTM A193 GR B7 WITH ASTM A194 GRADE 2H NUTS



AMERITE
BY AMERICA'S STEEL COMPANY

P. O. Box 29 Shelby, OH 44875
 info@amertower.com
 www.amertower.com
 Since 1953

Telephone (419) 347-1185 Fax (419) 347-1654

160' AMTO

SIZE A	DWG NO 2839	REV
DRAWN BY: TAN		DATE 2/2/2022