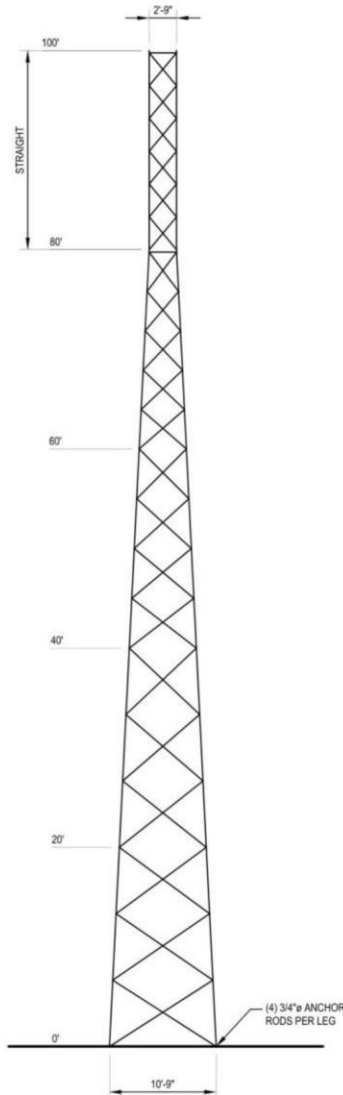
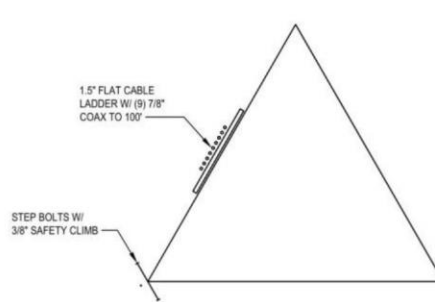


| | | | |
|--------------|----------------------|-----------------------|-----------------------|
| LEGS | 4.5" OD x 0.237" THK | 4.6" OD x 0.226" THK | 3.5" OD x 0.216" THK |
| DIAGONALS | L2 x 2 x 3/16 | L1 3/4 x 1 3/4 x 3/16 | L1 1/2 x 1 1/2 x 3/16 |
| HORIZONTALS | | N/A | L1 1/2 x 1 1/2 x 3/16 |
| BRACE BOLTS | (1) 5/8" | (4) 3/4" | (1) 1/2" |
| FLANGE BOLTS | (4) 5/8" | (4) 3/8" | (4) 5/8" |
| BAY SPACING | 6 BAYS @ 6'-5" | 6 BAYS @ 5' | 5 BAYS @ 3'-11 3/8" |
| SECTION | 58 | 7 | 6 BAYS @ 3'-3 1/2" |
| | | | 9 |



TOWER ELEVATION



COAX LAYOUT

| ANTENNA LIST | | | |
|--------------|-----|---------------|----------|
| ELEV | QTY | ANTENNA | COAX |
| 100' | 1 | 163 SQ FT EPA | (9) 7/8" |

THE TABULATED ALLOWABLE EFFECTIVE PROJECTED AREAS (EPA) REPRESENT THE SUMMATION OF THE PROJECTED AREAS OF ALL ANTENNAS, MOUNTS, AND APPURTENANCES MULTIPLIED BY APPROPRIATE DRAG FACTORS. THE ALLOWABLE PROJECTED AREAS ARE ASSUMED TO BE PLACED SYMMETRICALLY ON THE STRUCTURE. LOWER EPA VALUES MAY APPLY FOR OTHER EPA ARRANGEMENTS.

| WIND DESIGN DATA | |
|---|---------------------|
| REFERENCE STANDARD | ANSI/TIA-222-H-2017 |
| CODE | 2018 IBC |
| BASIC WIND SPEED (MPH) | 115 |
| ICE THICKNESS (IN) | 2.0 |
| ICE WIND SPEED (MPH) | 40 |
| SERVICE WIND SPEED (MPH) | 60 |
| RISK CATEGORY | II |
| EXPOSURE CATEGORY | C |
| MAXIMUM TOPOGRAPHIC FACTOR, K _{zT} | 1.0 |

| SEISMIC DESIGN DATA | |
|---------------------|-----|
| RISK CATEGORY | II |
| SITE CLASS | D |
| S _s | 2.5 |
| S ₁ | 1.0 |

THE SUITABILITY OF THE TABULATED TOWER DESIGN CRITERIA FOR A SPECIFIC APPLICATION MUST BE VERIFIED PRIOR TO INSTALLATION BY THE PURCHASER BASED ON SITE-SPECIFIC DATA AND INTENDED USE OF THE STRUCTURE.

- ALL STEEL SHALL CONFORM TO THE FOLLOWING:
- A. PIPE LEGS: ASTM A500 GR C (46 KSI YIELD POINT MATERIAL)
 - B. ALL OTHER STEEL SHAPES AND PLATES: ASTM A572 GR 50 (50 KSI YIELD POINT MATERIAL)
 - C. STRUCTURAL BOLTS: ASTM A325 TYPE 1 WITH ASTM A563 GRADE DH NUTS
 - D. ANCHOR RODS: ASTM A193 GR B7 WITH ASTM A194 GRADE 2H NUTS



P. O. Box 29 Shelby, OH 44875

info@amertower.com Fax (419) 347-1654
www.amertower.com Since 1953

Telephone (419) 347-1185

100' AMTO

| | | |
|---------------|-------------|---------------|
| SIZE A | DWG NO 2817 | REV |
| DRAWN BY: TAN | | DATE 2/2/2022 |