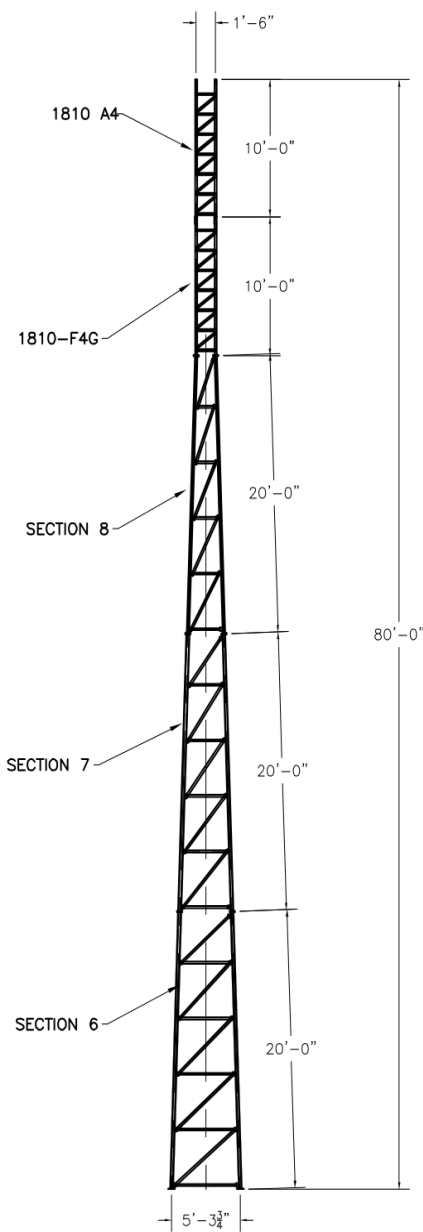


ASTM	
LEGS	2.375" x 0.218"
DIAGONALS	1.9" x 0.145"
GIRTS	2.0" x 10 GA
BRACE BOLTS	L1 3/4 x 1 3/4 x 1/8
SPLICE BOLTS	L1 1/2 x 1 1/2 x 1/8
ANCHOR BOLTS	L1 1/4 x 1 1/4 x 1/8
	(1)-5/8"φ
	(4)-1/2"φ
	(4)-7/8"φ (C1018 THREADED ROD)
	(2)-1/2"φ
	-SHOP WELDED-
	GRADE 5
	A36
	*



According to ANSI/EIA-222-F 1996

90 mph/78 mph + 1/2" radial ice w/ (3 second gust) per OBC AND IBC

	CaAa	Flat Plate Area	Weight	Elevation
No Ice	37.0 sq ft	20.56 sq ft	800 lbs	80.0 ft
1/2" Ice	45.0 sq ft	25.00 sq ft	1200 lbs	80.0 ft
No Ice	64.0 sq ft	35.56 sq ft	750 lbs	80 ft to 50 ft
1/2" Ice	78.0 sq ft	43.33 sq ft	1400 lbs	80 ft to 50 ft
(1)-7/8" coax Elevation 0 ft to 80 ft				
Climbing Ladder Elevation 0 ft to 60 ft				

70 mph/61 mph + 1/2" radial ice (Fastest MPH) per EIA-222-F

	CaAa	Flat Plate Area	Weight	Elevation
No Ice	38.5 sq ft	21.39 sq ft	800 lbs	80.0 ft
1/2" Ice	47.0 sq ft	26.11 sq ft	1200 lbs	80.0 ft
No Ice	68.0 sq ft	37.78 sq ft	750 lbs	80 ft to 50 ft
1/2" Ice	82.0 sq ft	45.56 sq ft	1400 lbs	80 ft to 50 ft
(1)-7/8" coax Elevation 0 ft to 80 ft				
Climbing Ladder Elevation 0 ft to 60 ft				



**AMERITE!**  
P.O. Box 29 Shelby, Ohio 44875  
www.amertower.com  
info@amertower.com  
Telephone (419) 347-1185 Since 1953 Fax (419) 347-1654

80' STANDARD

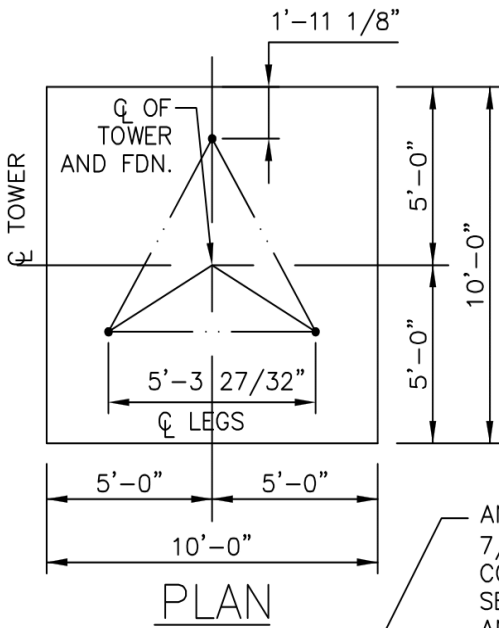
BY: DOW DATE: 12/21/02

DWG NO. 1062

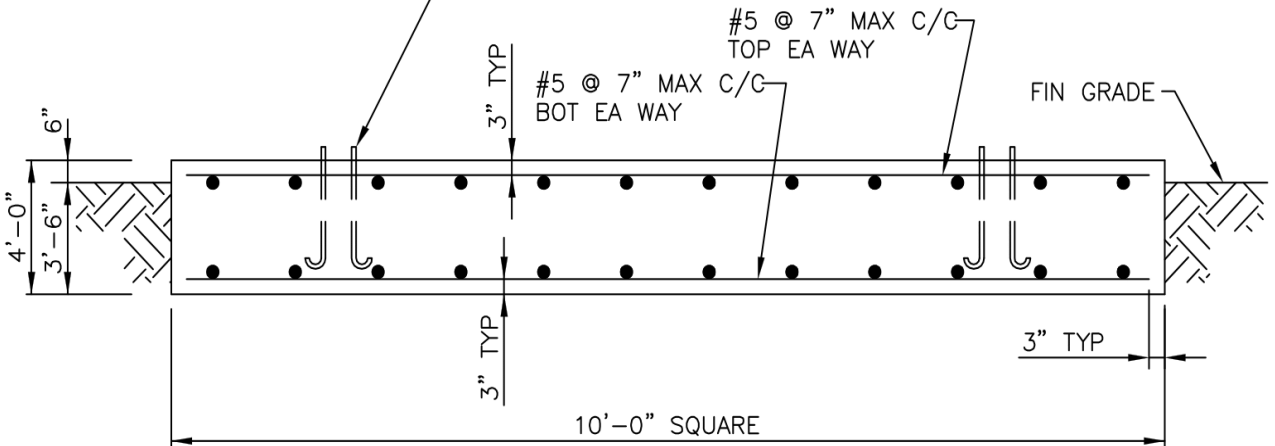
NOTES:

1. ALL CONCRETE SHALL HAVE A MINIMUM COMPRESSIVE STRENGTH OF 3000 PSI @ 28 DAYS.
2. REINFORCING STEEL SHALL CONFORM TO THE REQUIREMENTS OF ASTM A615 (GRADE 60).
3. TOTAL CONCRETE = 14.9 CUBIC YARDS.
4. FOUNDATION DESIGN BASED UPON ASSUMED SOIL PARAMETERS AS FOLLOWS:


ALLOW BEARING PRESSURE: 2000 PSF  
 UNIT SOIL WEIGHT: 100 PCF  
 WATER AND ROCK LOCATED BELOW FOOTING



ANCHOR BOLTS BY AMERICAN TOWER,  
 7/8"  $\phi$  x 3'-6" MIN EMBEDMENT INTO  
 CONCRETE. 180° END HOOK PER ACI.  
 SEE DRAWINGS BY AMERICAN TOWER FOR  
 ANCHOR BOLT ORIENTATION.



FOOTING MUST BEAR ON  
 UNDISTURBED SOIL OR  
 COMPACTED BACKFILL.

 P.O. Box 29 Shelby, Ohio 44875 www.amertower.com info@amertower.com	
Telephone (419)347-1185	Fax (419) 347-1654
Since 1953	
80' STANDARD FOUNDATION	
BY: DOW	DATE: 12/21/02
DWG NO. 1062 A	