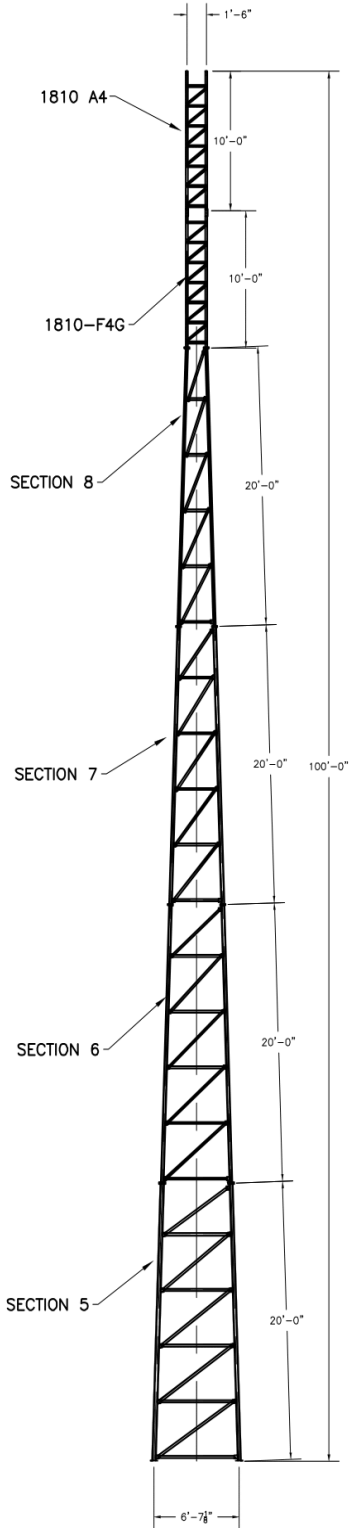


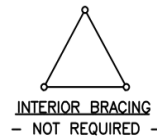
ASTM		*	
LEGS	2.875" x 0.203"	2.375" x 0.218"	1.9" x 0.145"
DIAGONALS	L2 x 2 x 1/8	L1 3/4 x 1 3/4 x 1/8	L1 1/2 x 1 1/2 x 1/8
GIRTS	L2 x 2 x 1/8	L1 3/4 x 1 3/4 x 1/8	L1 1/2 x 1 1/2 x 1/8
BRACE BOLTS	(4)-5/8"φ	(1)-5/8"φ	(4)-1/2"φ
SPICE BOLTS	(4)-1"φ (C1018 THREADED ROD)	(4)-5/8"φ	(2)-1/2"φ
ANCHOR BOLTS			
			GRADE
			A36
			5
			2.0" x 10 GA
			L3/4 x 3/4 x 1/8
			L1 1/4 x 1 1/4 x 1/8
			-SHOP WELDED-



According to ANSI/EIA-222-F 1996

90 mph/78 mph + 1/2" radial ice w/ (3 second gust) per OBC AND IBC				
	CaAa	Flat Plate Area	Weight	Elevation
No Ice	34.0 sq ft	18.89 sq ft	800 lbs	100 ft
1/2" Ice	42.0 sq ft	23.33 sq ft	1100 lbs	100 ft
No Ice	59.0 sq ft	32.78 sq ft	750 lbs	100 ft to 70 ft
1/2" Ice	71.5 sq ft	39.72 sq ft	1300 lbs	100 ft to 70 ft
(1)-7/8" coax Elevation 0 ft to 100 ft				
Climbing Ladder Elevation 0 ft to 80 ft				

70 mph/61 mph + 1/2" radial ice (Fastest MPH) per EIA-222-F				
	CaAa	Flat Plate Area	Weight	Elevation
No Ice	35.5 sq ft	19.72 sq ft	800 lbs	100 ft
1/2" Ice	43.0 sq ft	23.89 sq ft	1100 lbs	100 ft
No Ice	62.0 sq ft	34.44 sq ft	750 lbs	100 ft to 70 ft
1/2" Ice	74.5 sq ft	41.39 sq ft	1300 lbs	100 ft to 70 ft
(1)-7/8" coax Elevation 0 ft to 100 ft				
Climbing Ladder Elevation 0 ft to 80 ft				



AMERITE!

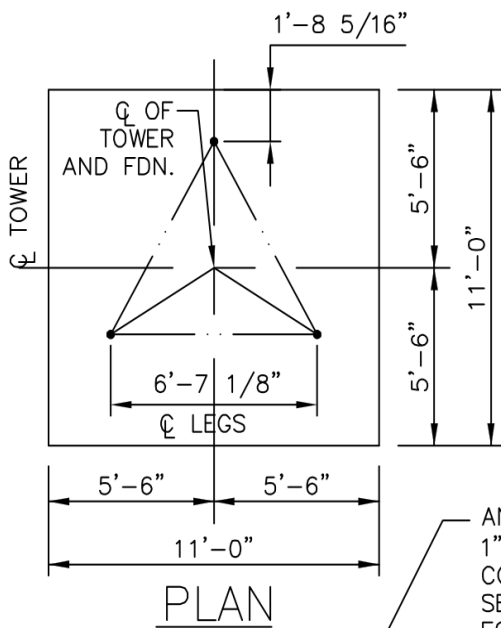
P.O. Box 29 Shelby, Ohio 44875
www.amertower.com
info@amertower.com

Telephone (419) 347-1185 Since 1953 Fax (419) 347-1654

100' STANDARD

BY: DOW DATE: 12/21/02

DWG NO. 1061

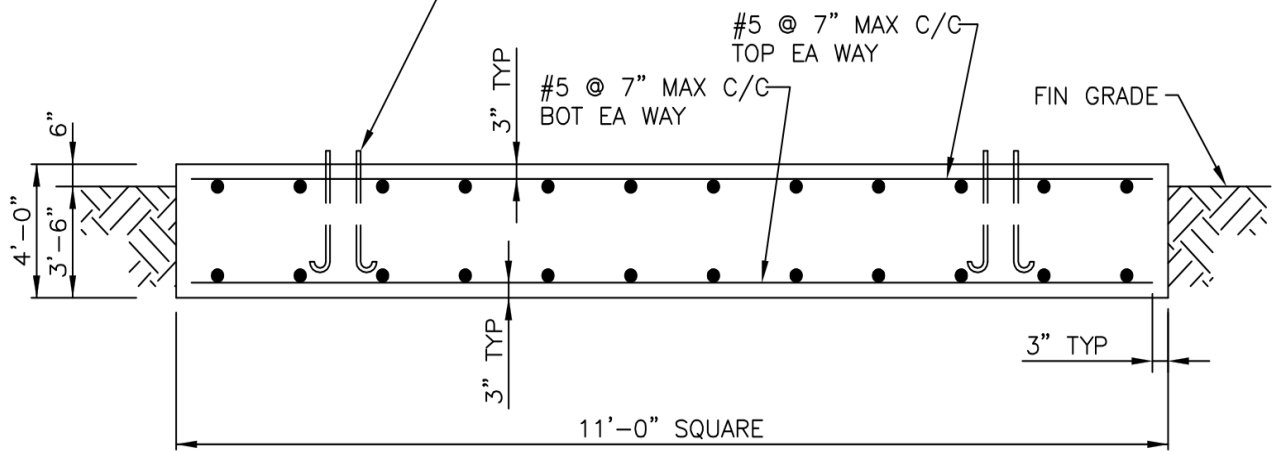


NOTES:

1. ALL CONCRETE SHALL HAVE A MINIMUM COMPRESSIVE STRENGTH OF 3000 PSI @ 28 DAYS.
2. REINFORCING STEEL SHALL CONFORM TO THE REQUIREMENTS OF ASTM A615 (GRADE 60).
3. TOTAL CONCRETE = 18 CUBIC YARDS.
4. FOUNDATION DESIGN BASED UPON ASSUMED SOIL PARAMETERS AS FOLLOWS:


ALLOW BEARING PRESSURE: 2000 PSF
 UNIT SOIL WEIGHT: 100 PCF
 WATER AND ROCK LOCATED BELOW FOOTING

ANCHOR BOLTS BY AMERICAN TOWER,
 1"Ø x 3'-6" MIN EMBEDMENT INTO
 CONCRETE. 180° END HOOK PER ACI.
 SEE DRAWINGS BY AMERICAN TOWER
 FOR ANCHOR BOLT ORIENTATION.



MAT FOUNDATION

FOOTING MUST BEAR ON
 UNDISTURBED SOIL OR
 COMPACTED BACKFILL.

 P.O. Box 29 Shelby, Ohio 44875 www.amertower.com info@amertower.com	
Telephone (419) 347-1185	Fax (419) 347-1654
Since 1953	
100' STANDARD FOUNDATION	
BY: DOW	DATE: 12/21/02
DWG NO. 1061 A	