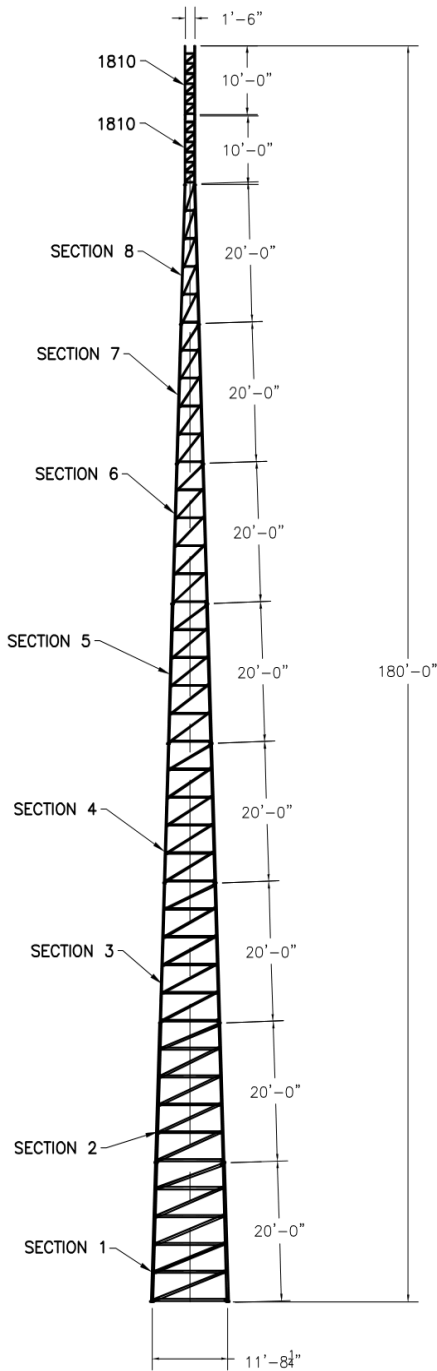


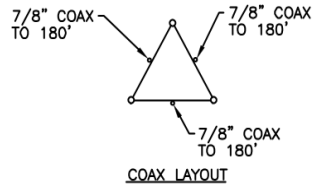
ASTM		GRADE 5	
LEGS	4" x 0.318"	2.875" x 0.276"	2.375" x 0.218"
DIAGONALS	L4 x 4 x 1/4	L3 x 3 x 3/16	L1 3/4 x 1 3/4
GIRTS	L4 x 4 x 1/4	L3 x 3 x 3/16	L1 3/4 x 1 3/4
BRACE BOLTS	(1)-3/4"	(4)-3/4"	(1)-5/8"
SPLICE BOLTS	(4)-1"	(4)-7/8"	(4)-5/8"
ANCHOR BOLTS	(4)-1"	(4)-3/4"	(4)-1/2"



According to ANSI/EIA-222-F 1996

90 mph/78 mph + 1/2" radial ice w/ (3 second gust) per OBC AND IBC				
	CoAa	Flat Plate Area	Weight	Elevation
No Ice	22.0 sq ft	12.22 sq ft	800 lbs	180 ft
1/2" Ice	25.0 sq ft	13.88 sq ft	1000 lbs	180 ft
No Ice	36.0 sq ft	20.00 sq ft	800 lbs	180 ft to 150 ft
1/2" Ice	41.0 sq ft	22.78 sq ft	1400 lbs	180 ft to 150 ft
(3)-7/8" coax Elevation 0 ft to 180 ft Coax to be equally distributed to three tower faces				
Climbing Ladder Elevation 0 ft to 160 ft				

70 mph/61 mph + 1/2" radial ice (Fastest MPH) per EIA-222-F				
	CoAa	Flat Plate Area	Weight	Elevation
No Ice	21.0 sq ft	11.67 sq ft	800 lbs	180 ft
1/2" Ice	24.0 sq ft	13.33 sq ft	1000 lbs	180 ft
No Ice	36.0 sq ft	20.00 sq ft	800 lbs	180 ft to 150 ft
1/2" Ice	40.0 sq ft	22.22 sq ft	1400 lbs	180 ft to 150 ft
(3)-7/8" coax Elevation 0 ft to 180 ft Coax to be equally distributed to three tower faces				
Climbing Ladder Elevation 0 ft to 160 ft				



* PIPE LEGS 42 KSI MIN YIELD
10 GA TUBE LEGS 30 KSI MIN YIELD



INTERIOR BRACING
- NOT REQUIRED -

FOUNDATION REACTIONS
TOTAL MOMENT: 774 FT-KIPS
TOTAL SHEAR: 10 KIPS
TOTAL DOWNLOAD: 21 KIPS

AMERITE!

P.O. Box 29 Shelby, Ohio 44875

www.amertower.com
info@amertower.com
Since 1955

Telephone
(419) 347-1185

Fax
(419) 347-1654

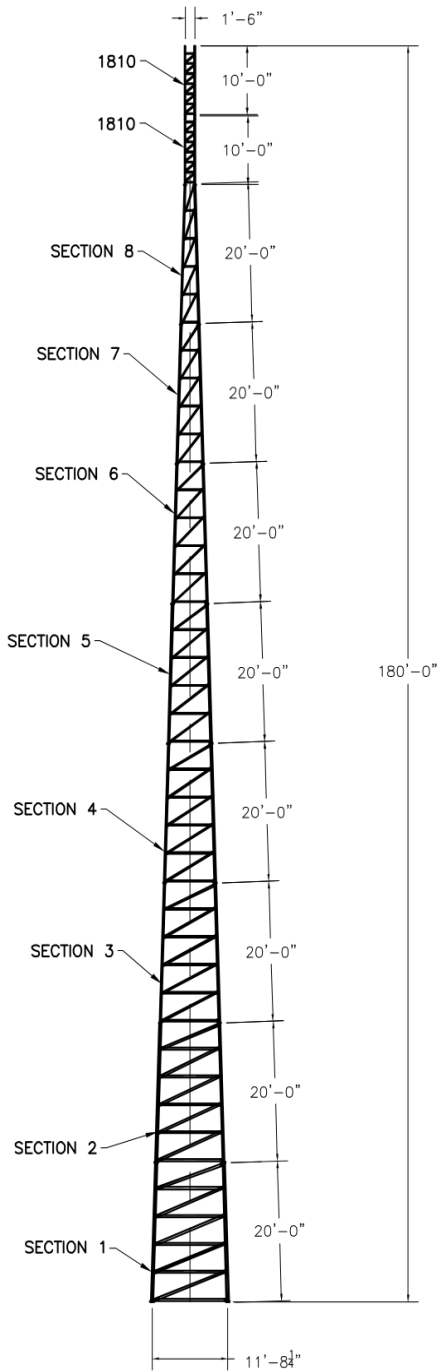
180'
HEAVY

BY: DOW

DATE: 12/21/02

DWG NO. 1181

ASTM		GRADE 5	
LEGS	4" x 0.318"	3.5" x 0.300"	2.875" x 0.276"
DIAGONALS	L4 x 4 x 1/4	L3 x 3 x 3/16	L2 x 2 x 1/8
GIRTS	L4 x 4 x 1/4	L3 x 3 x 3/16	L2 x 2 x 1/8
BRACE BOLTS	(1)-3/4"	(4)-7/8"	(4)-5/8"
SPLICE BOLTS	(4)-1"	(4)-3/4"	(4)-5/8"
ANCHOR BOLTS	(4)-1"	(4)-3/4"	(4)-5/8"



According to ANSI/EIA-222-F 1996

90 mph/78 mph + 1/2" radial ice w/ (3 second gust) per OBC AND IBC

	CoAa	Flat Plate Area	Weight	Elevation
No Ice	22.0 sq ft	12.22 sq ft	800 lbs	180 ft
1/2" Ice	25.0 sq ft	13.88 sq ft	1000 lbs	180 ft
No Ice	36.0 sq ft	20.00 sq ft	800 lbs	180 ft to 150 ft
1/2" Ice	41.0 sq ft	22.78 sq ft	1400 lbs	180 ft to 150 ft
(3)-7/8" coax Elevation 0 ft to 180 ft Coax to be equally distributed to three tower faces				
Climbing Ladder Elevation 0 ft to 160 ft				

70 mph/61 mph + 1/2" radial ice (Fastest MPH) per EIA-222-F

	CoAa	Flat Plate Area	Weight	Elevation
No Ice	21.0 sq ft	11.67 sq ft	800 lbs	180 ft
1/2" Ice	24.0 sq ft	13.33 sq ft	1000 lbs	180 ft
No Ice	36.0 sq ft	20.00 sq ft	800 lbs	180 ft to 150 ft
1/2" Ice	40.0 sq ft	22.22 sq ft	1400 lbs	180 ft to 150 ft
(3)-7/8" coax Elevation 0 ft to 180 ft Coax to be equally distributed to three tower faces				
Climbing Ladder Elevation 0 ft to 160 ft				



AMERITE!
P.O. Box 29 Shelby, Ohio 44875
www.amertower.com
info@amertower.com
Since 1955

Telephone (419) 347-1185 Fax (419) 347-1654

180'
HEAVY

BY: DOW DATE: 12/21/02

DWG NO. 1181