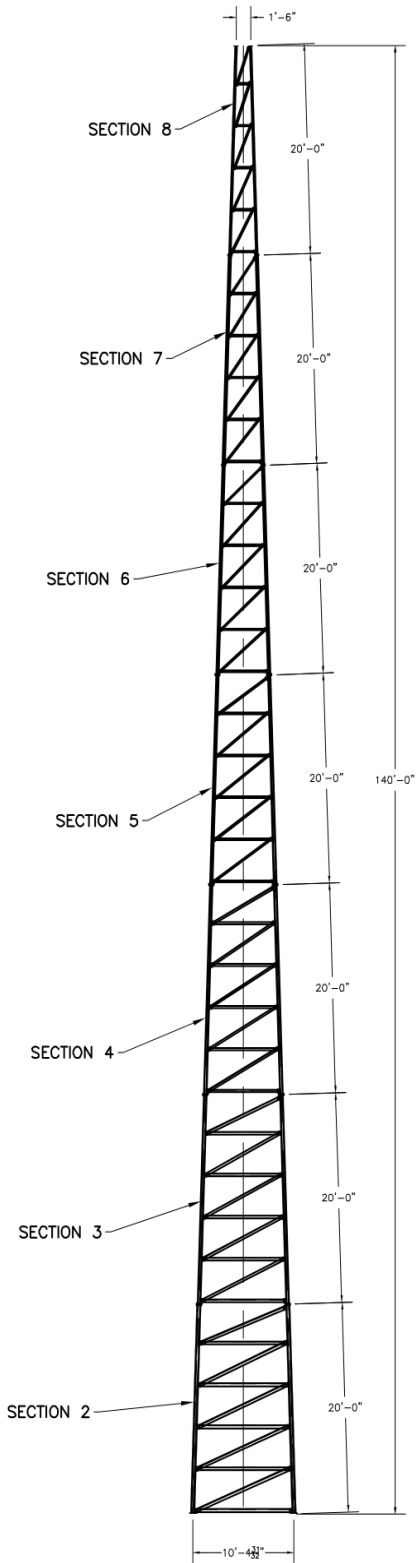


ASTM					
			*		
			A36		
			GRADE		
			5		
LEGS	3.5" x 0.300"	2.875" x 0.276"	2.875" x 0.203"	2.375" x 0.154"	1.9" x 0.145"
DIAGONALS	L3 1/2x3 1/2x1/4	L3 x 3 x 3/16	L2 1/2x2 1/2x3/16	L1 3/4 x 1 3/4 x 1/8	L1 1/2x1 1/2x1/8
GIRTS	L3 1/2x3 1/2x1/4	L3 x 3 x 3/16	L2 1/2x2 1/2x3/16	L1 3/4 x 1 3/4 x 1/8	L1 1/2x1 1/2x1/8
BRACE BOLTS	(1)-3/4"φ	(4)-7/8"φ	(1)-5/8"φ	(4)-5/8"φ	(4)-1/2"φ
SPLICE BOLTS	(4)-1"φ (C1018 THREADED ROD)	(4)-3/4"φ	(4)-5/8"φ	(4)-1/2"φ	(4)-1/2"φ
ANCHOR BOLTS	(4)-1"φ (C1018 THREADED ROD)	(4)-3/4"φ	(4)-5/8"φ	(4)-1/2"φ	(4)-1/2"φ



According to ANSI/EIA-222-F 1996

90 mph/78 mph + 1/2" radial ice w/ (3 second gust) per OBC AND IBC				
	CaAa	Flat Plate Area	Weight	Elevation
No Ice	50.0 sq ft	27.78 sq ft	1200 lbs	140 ft
1/2" Ice	67.0 sq ft	37.22 sq ft	1800 lbs	140 ft
No Ice	93.0 sq ft	51.67 sq ft	2500 lbs	140 ft to 110 ft
1/2" Ice	112.0 sq ft	62.22 sq ft	3200 lbs	140 ft to 110 ft
(3)-7/8" coax Elevation 0 ft to 140 ft				
Coax to be equally distributed to three tower faces				
Climbing Ladder Elevation 0 ft to 140 ft				

70 mph/61 mph + 1/2" radial ice (Fastest MPH) per EIA-222-F				
	CaAa	Flat Plate Area	Weight	Elevation
No Ice	53.0 sq ft	29.44 sq ft	1200 lbs	140 ft
1/2" Ice	70.0 sq ft	38.89 sq ft	1800 lbs	140 ft
No Ice	95.0 sq ft	52.78 sq ft	2500 lbs	140 ft to 110 ft
1/2" Ice	113.0 sq ft	62.78 sq ft	3200 lbs	140 ft to 110 ft
(3)-7/8" coax Elevation 0 ft to 140 ft				
Coax to be equally distributed to three tower faces				
Climbing Ladder Elevation 0 ft to 140 ft				



AMERITE

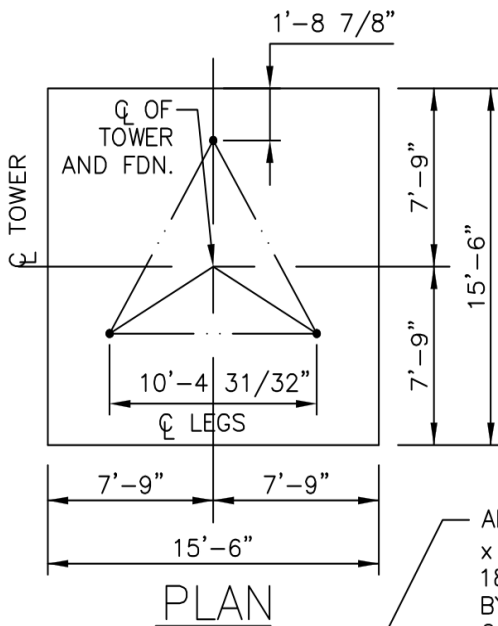
P.O. Box 29 Shelby, Ohio 44875
www.amertower.com
info@amertower.com

Telephone (419) 347-1185 Since 1953 Fax (419) 347-1654

140' HEAVY

BY: DOW DATE: 12/21/02

DWG NO. 1054

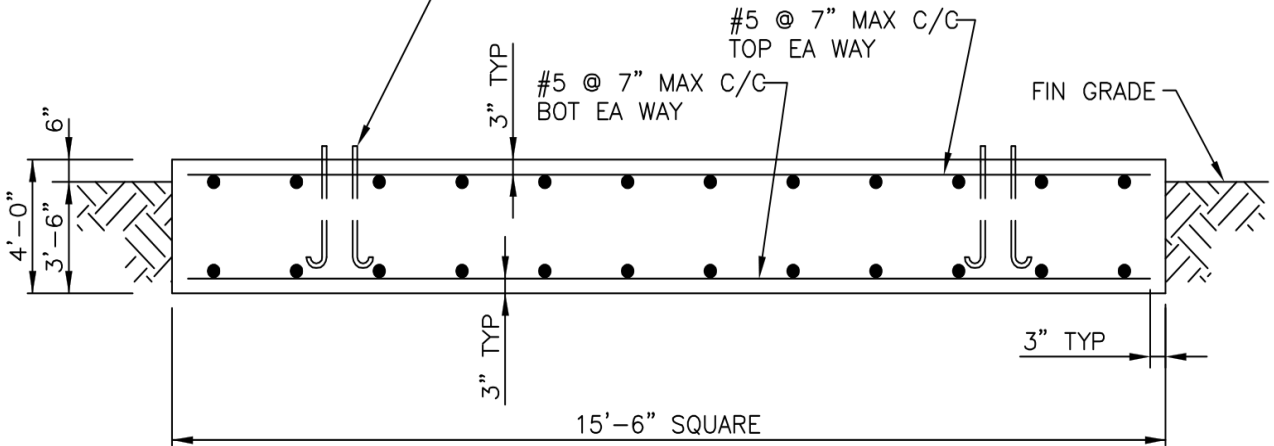


NOTES:

1. ALL CONCRETE SHALL HAVE A MINIMUM COMPRESSIVE STRENGTH OF 3000 PSI @ 28 DAYS.
2. REINFORCING STEEL SHALL CONFORM TO THE REQUIREMENTS OF ASTM A615 (GRADE 60).
3. TOTAL CONCRETE = 35.6 CUBIC YARDS.
4. FOUNDATION DESIGN BASED UPON THE FOLLOWING:


ALLOW BEARING PRESSURE: 2000 PSF
 UNIT WEIGHT: 100 PCF
 WATER AND ROCK LOCATED BELOW FOOTING

ANCHOR BOLTS BY AMERICAN TOWER, 1"Ø x 3'-6" MIN EMBEDMENT INTO CONCRETE. 180° END HOOK PER ACI. SEE DRAWINGS BY AMERICAN TOWER FOR ANCHOR BOLT ORIENTATION.



MAT FOUNDATION

FOOTING MUST BEAR ON UNDISTURBED SOIL OR COMPACTED BACKFILL.



P.O. Box 29 Shelby, Ohio 44875
 www.amertower.com
 info@amertower.com

Telephone (419) 347-1185	Since 1953	Fax (419) 347-1654
140' HEAVY FOUNDATION		
BY: DOW	DATE: 12/21/02	
DWG NO. 1054 A		