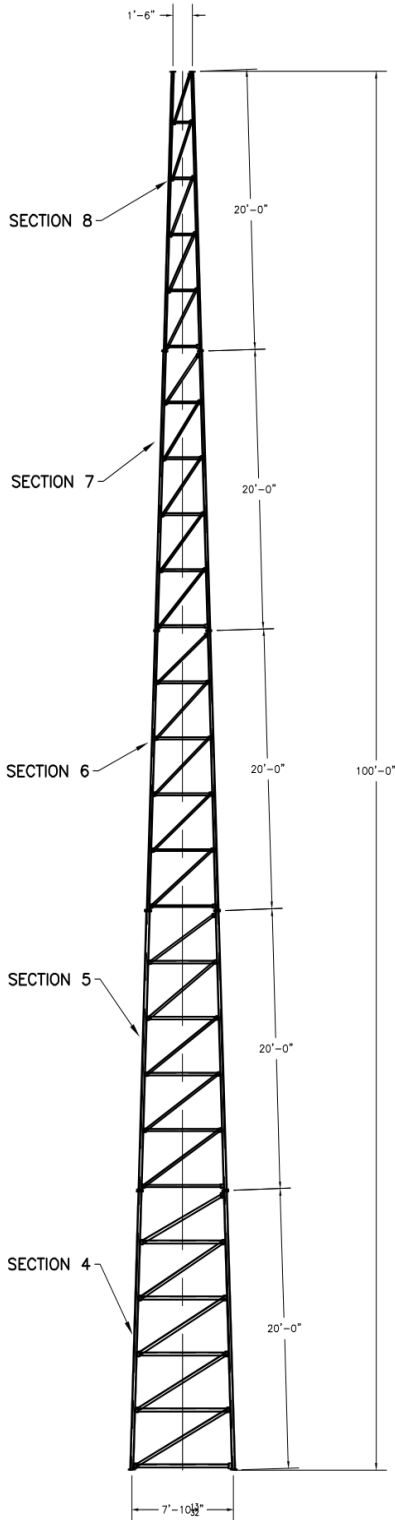


AD3-7024-PROFILE

ASTM			
	*		
LEGS	2.875" x 0.276"	2.875" x 0.203"	2.375" x 0.154"
DIAGONALS	L2 1/2 x 2 1/2 x 3/16	L2 x 2 x 1/8	L1 1/2 x 1 1/2 x 1/8
GIRTS	L2 1/2 x 2 1/2 x 3/16	L2 x 2 x 1/8	L1 3/4 x 1 3/4 x 1/8
BRACE BOLTS	(4)-3/4"	(4)-5/8"	(4)-1/2"
SPLICE BOLTS	(4)-1"	(4)-5/8"	(4)-1/2"
ANCHOR BOLTS	(4)-1"	(4)-5/8"	(4)-1/2"



According to ANSI/EIA-222-F 1996

90 mph/78 mph + 1/2" radial ice w/ (3 second gust) per OBC AND IBC				
	CaAa	Flat Plate Area	Weight	Elevation
No Ice	54.0 sq ft	30.00 sq ft	1400 lbs	100 ft
1/2" Ice	72.0 sq ft	40.00 sq ft	2000 lbs	100 ft
No Ice	119.0 sq ft	66.11 sq ft	3200 lbs	100 ft to 70 ft
1/2" Ice	144.0 sq ft	80.00 sq ft	4000 lbs	100 ft to 70 ft
(3)-7/8" coax Elevation 0 ft to 100 ft Coax to be equally distributed to three tower faces				
Climbing Ladder Elevation 0 ft to 100 ft				

70 mph/61 mph + 1/2" radial ice (Fastest MPH) per EIA-222-F				
	CaAa	Flat Plate Area	Weight	Elevation
No Ice	57.0 sq ft	31.67 sq ft	1400 lbs	100 ft
1/2" Ice	76.0 sq ft	42.22 sq ft	2000 lbs	100 ft
No Ice	125.0 sq ft	69.44 sq ft	3200 lbs	100 ft to 70 ft
1/2" Ice	150.0 sq ft	83.33 sq ft	4000 lbs	100 ft to 70 ft
(3)-7/8" coax Elevation 0 ft to 100 ft Coax to be equally distributed to three tower faces				
Climbing Ladder Elevation 0 ft to 100 ft				



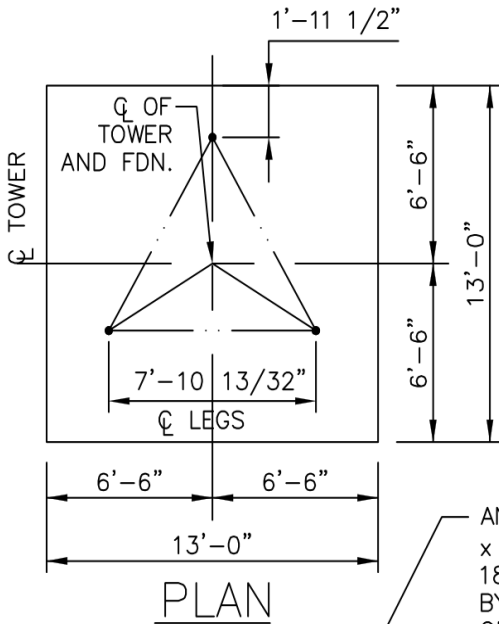
AMERITE
P.O. Box 29 Shelby, Ohio 44875
www.amertower.com
info@amertower.com

Telephone (419) 347-1185 Fax (419) 347-1654
Since 1953

100' HEAVY

BY: DW DATE: 12/21/02

DWG NO. 1056

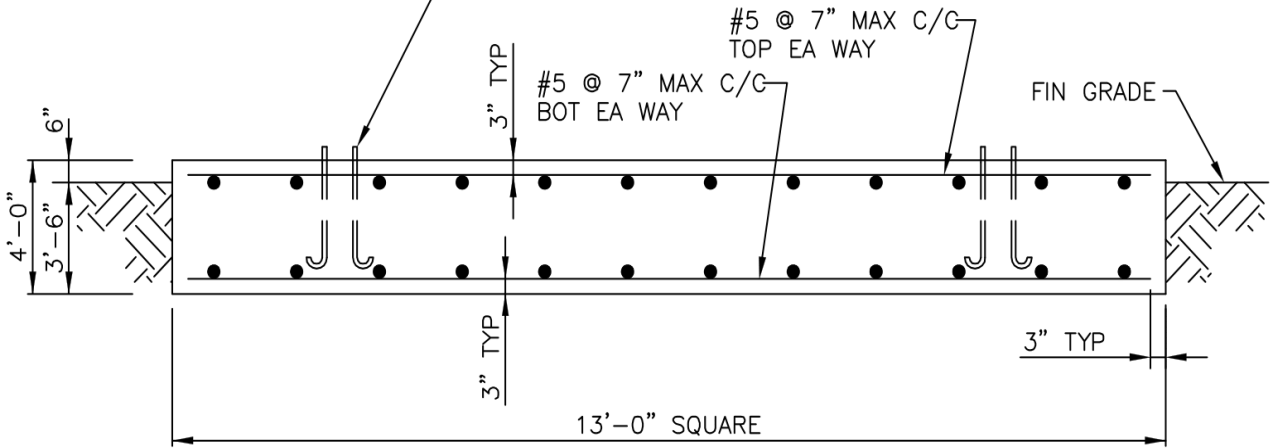


NOTES:

1. ALL CONCRETE SHALL HAVE A MINIMUM COMPRESSIVE STRENGTH OF 3000 PSI @ 28 DAYS.
2. REINFORCING STEEL SHALL CONFORM TO THE REQUIREMENTS OF ASTM A615 (GRADE 60).
3. TOTAL CONCRETE = 25.1 CUBIC YARDS.
4. FOUNDATION DESIGN BASED UPON THE FOLLOWING:


ALLOW BEARING PRESSURE: 2000 PSF
 UNIT WEIGHT: 100 PCF
 WATER AND ROCK LOCATED BELOW FOOTING

ANCHOR BOLTS BY AMERICAN TOWER, 1"φ x 3'-6" MIN EMBEDMENT INTO CONCRETE. 180° END HOOK PER ACI. SEE DRAWINGS BY AMERICAN TOWER FOR ANCHOR BOLT ORIENTATION.



MAT FOUNDATION

FOOTING MUST BEAR ON UNDISTURBED SOIL OR COMPACTED BACKFILL.

 P.O. Box 29 Shelby, Ohio 44875 www.amertower.com info@amertower.com Since 1953	
Telephone (419)347-1185	Fax (419) 347-1654
100' HEAVY FOUNDATION	
BY: DOW	DATE: 12/21/02
DWG NO. 1056 A	