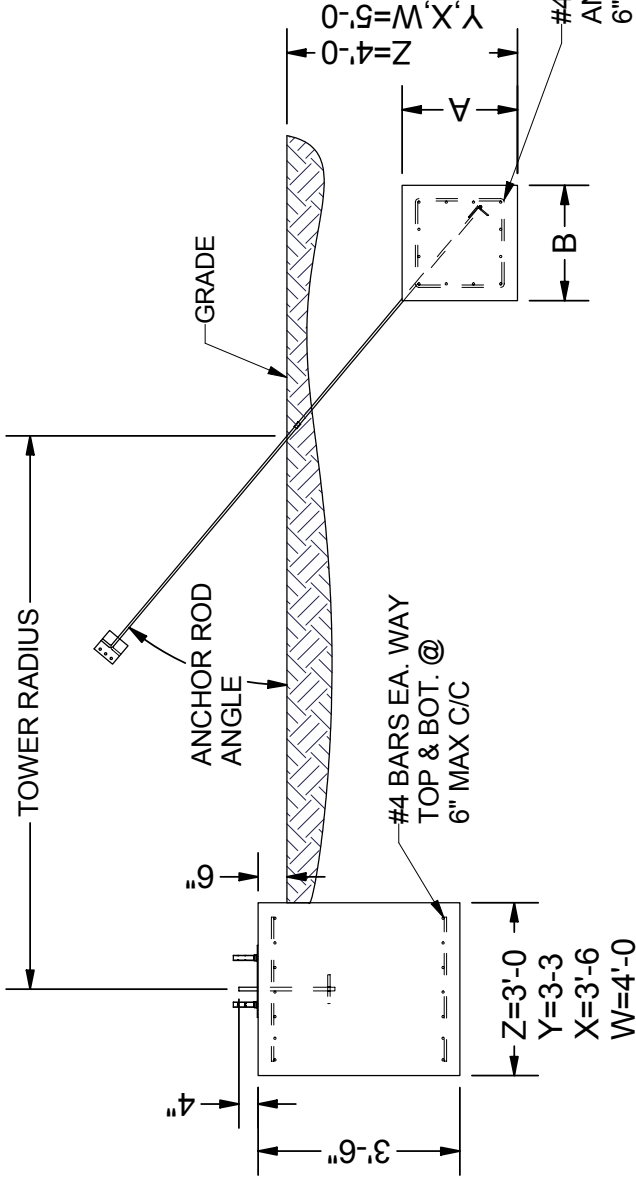
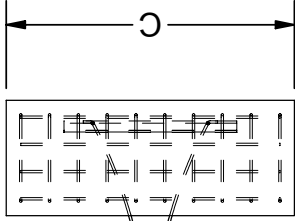
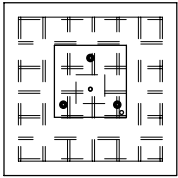


REV	DATE	DESCRIPTION
A	7/23/2005	ADDED 45 FOUNDATIONS
B	9/10/2005	ADDED 55 FOUNDATIONS

REVISION HISTORY

Z=3'-0"  
Y=3'-3"  
X=3'-6"  
W=4'-0"



ANCHOR TYPE	A	B	C	ALLOW HORIZ (LBS)	ALLOW UPLIFT (LBS)
4A	1'-6	1'-6	1'-6	1100	1570
4B	1'-6	1'-6	2'-0	1460	1890
4C	1'-6	1'-6	2'-6	1830	2210
4D	1'-6	1'-6	3'-0	2190	2530
4E	1'-6	1'-6	3'-6	2560	2850
4F	1'-6	1'-6	4'-0	2920	3170
4G	2'-0	2'-0	4'-0	3600	3590
4H	2'-0	2'-0	5'-0	4500	4390
4J	2'-0	2'-0	4'-6	4050	4000
5A	2'-0	2'-0	4'-0	4800	5280
5B	2'-0	2'-0	4'-6	5400	5800
5C	2'-0	2'-0	5'-0	6000	6320
5D	2'-0	2'-0	5'-6	6600	6840
5E	2'-0	2'-0	6'-0	7200	7360
5F	2'-0	2'-0	6'-6	7800	7880
5G	2'-6	2'-6	6'-0	8440	8260
5H	2'-6	2'-6	6'-6	9140	8880
5I	2'-6	2'-6	7'-0	9840	9500
5J	2'-6	2'-6	7'-6	10550	10120
5K	2'-6	2'-6	8'-0	11250	10740

TYPICAL ANCHOR

STANDARD BASE FOUNDATION

- Z-ALLOW COMPRESSION = 12,000 LBS. (AMERITE 25 TOWERS ONLY)
- Z-ALLOW COMPRESSION = 12,000 LBS. (AMERITE 45 TOWERS LESS THAN 130')
- Y-ALLOW COMPRESSION = 16,000 LBS. (AMERITE 45 TOWERS 140' AND UP)(AMERITE 55 TOWERS 170' AND LESS)
- X-ALLOW COMPRESSION = 20,000 LBS. (AMERITE 55 180'-240')
- W-ALLOW COMPRESSION = 25,000 LBS. (AMERITE 55 ABOVE 240')

SOIL DESIGN PROPERTIES

- ALLOWABLE BEARING PRESSURE = 2000 PSF
- SOIL UNIT WEIGHT = 100 PCF
- FRICTION ANGLE 30# NO COHESION
- DELETERIOUS SOIL, ORGANICS, PEAT, SOFT SOILS, WATER, ROCK NOT CONSIDERED

AMERICAN TOWER COMPANY

ISO 9001-2000  
P.O. Box 29 Shelby, Ohio 44875  
Telephone (419) 347-1185  
Fax (419) 347-1654  
info@amertower.com  
www.amertower.com  
Since 1953

TITLE  
AMERITE 25,45, 55 GUYED FOUNDATION

SIZE A	DWG NO 1306	SHT. # 1
DRAWN BY: DOW		DATE 6/23/2005