



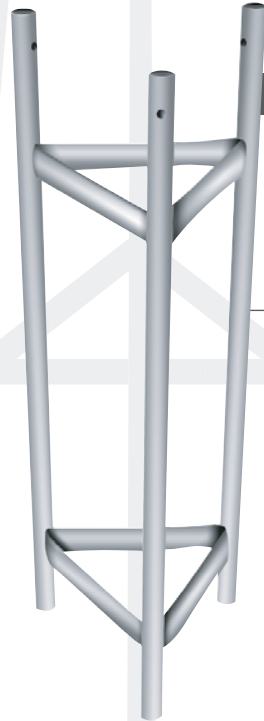
# Special Communication Tower

## Top Section & Accessories



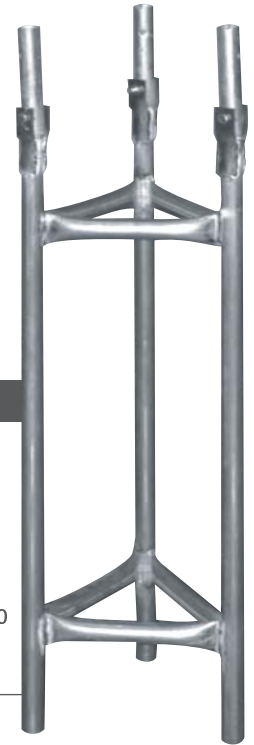
### S-7 Top

Top Tube:  
1 7/8" O.D. x 16 gauge  
Projection: 6"  
Overall Length: 11 3/4"  
2 - 3/8" screws



### F-2 3' Base Section

For installing in  
concrete or in  
ground trench



### F-2 Tilt Tilt Base

For installation  
below ground  
with concrete.  
Top is hinged so  
that tower may  
be lowered



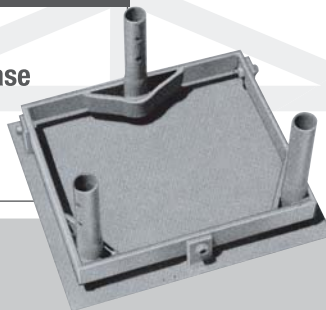
### DIB Drive-In Base

12" x 14 1/2" plate  
with drive tube



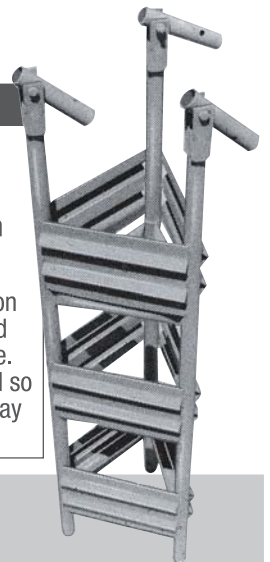
### RP-1 Roof Plate

12" x 14 1/2"  
For flat roof, concrete pad  
& guyed tower installation



### SRP-1 Hinged Base

For flat roof  
or concrete  
pad



### F-4 Ground Foundation Base

For installation  
below ground  
with concrete.  
Top is hinged so  
that tower may  
be lowered