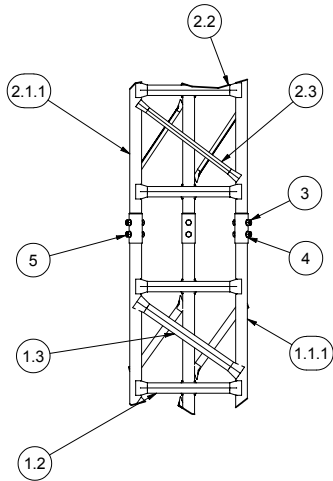


90 mph/78 mph + 1/2" radial ice (3 second gust) per OBC and IBC				
	CaAa	Flat Plate Area	Weight	Elevation
No Ice	6.5 sq ft	3.6 sq ft	80 lbs	60.0 ft
1/2" Ice	6.2 sq ft	3.4 sq ft	120 lbs	60.0 ft
(1)-1/2" coax Elevation 0 ft to 60 ft				
70 mph/61 mph + 1/2" radial ice (Fastest MPH) per EIA-222-F				
	CaAa	Flat Plate Area	Weight	Elevation
No Ice	5.6 sq ft	3.1 sq ft	80 lbs	60.0 ft
1/2" Ice	5.1 sq ft	2.8 sq ft	120 lbs	60.0 ft
(1)-1/2" coax Elevation 0 ft to 60 ft				

INTERIOR BRACING
- NOT REQUIRED -

FOUNDATION REACTIONS
TOTAL MOMENT: 34.3 FT-KIPS
TOTAL SHEAR: 1 KIPS
TOTAL DOWNLOAD: 2 KIPS



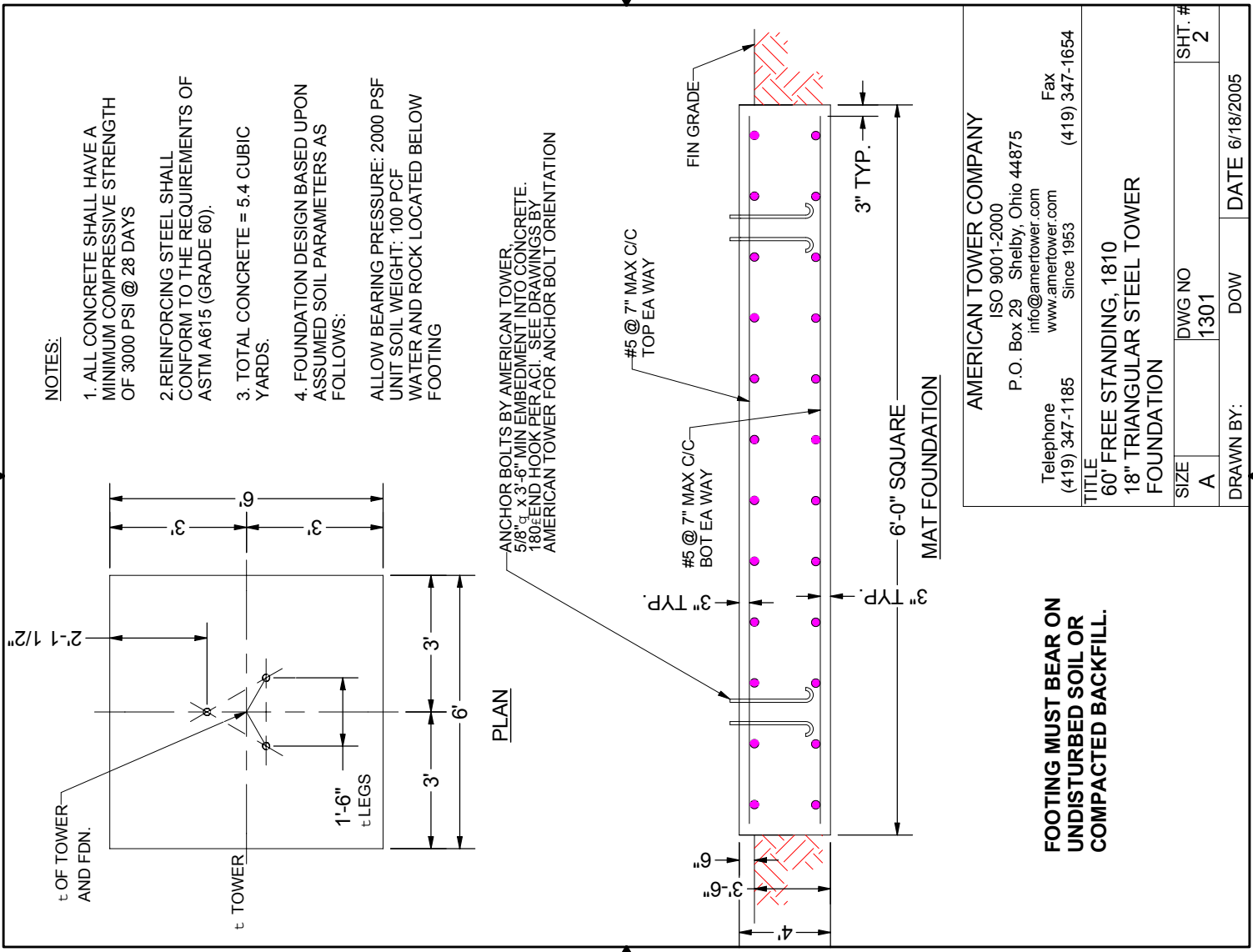
ITEM	QTY	PART NUMBER	DESCRIPTION
5	30		A325, 1/2-13 UNC x 3 LG.
4	30		A325, 1/2" WASHER
3	30		A325, 1/2-13 UNC HEX NUT
2.3	18	1196	0.75 x 0.75 x 3/16 A36 ANGLE - DIAGONAL
2.2	21	1195	1.25 x 1.25 x 3/16 A36 ANGLE - HORIZONTAL
2.1.2	1	1192	2 1/4" O.D. x 1/8 WALL x 0'-5, A-513 (50 kpsi MIN YIELD)
2.1.1	1	1191	2" O.D. x 10 GA. (.134) x 10'-0, A-513 (50 kpsi MIN YIELD)
2.1	3	1193	LEG WELDMENT
2	5	1194	1810-A4 MID-SECTION
1.3	18	1197	1.25 x 1.25 x 3/16 A36 ANGLE - DIAGONAL
1.2	21	1195	1.25 x 1.25 x 3/16 A36 ANGLE - HORIZONTAL
1.1.2	1	1199	FOOT PAD
1.1.1	1	1198	2" O.D. x 10 GA. (.134) x 9'-11 11/16, A-513 (50 kpsi MIN YIELD)
1.1	3	1200	LEG WELDMENT
1	1	1201	1810-F4G TOWER BASE

AMERICAN TOWER COMPANY
ISO 9001-2000
P.O. Box 29 Shelby, Ohio 44875
info@amertower.com
www.amertower.com
Telephone (419) 347-1185 Since 1953 Fax (419) 347-1654

TITLE
60' FREE STANDING, 1810
18" TRIANGULAR STEEL TOWER

SIZE B	DWG NO 1301	SHT. # 1
-----------	----------------	-------------

DRAWN BY: DOW DATE 6/18/2005



NOTES:

1. ALL CONCRETE SHALL HAVE A MINIMUM COMPRESSIVE STRENGTH OF 3000 PSI @ 28 DAYS
2. REINFORCING STEEL SHALL CONFORM TO THE REQUIREMENTS OF ASTM A615 (GRADE 60).
3. TOTAL CONCRETE = 5.4 CUBIC YARDS.
4. FOUNDATION DESIGN BASED UPON ASSUMED SOIL PARAMETERS AS FOLLOWS:
 ALLOW BEARING PRESSURE: 2000 PSF
 UNIT SOIL WEIGHT: 100 PCF
 WATER AND ROCK LOCATED BELOW FOOTING

PLAN

ANCHOR BOLTS BY AMERICAN TOWER
 5/8" dia. x 3'-6" MIN EMBEDMENT INTO CONCRETE.
 180# END HOOK PER AGI. SEE DRAWINGS BY
 AMERICAN TOWER FOR ANCHOR BOLT ORIENTATION

AMERICAN TOWER COMPANY
 ISO 9001-2000
 P.O. Box 29 Shelby, Ohio 44875
 info@amertower.com
 Telephone (419) 347-1185
 Fax (419) 347-1654
 www.amertower.com
 Since 1953

FOOTING MUST BEAR ON UNDISTURBED SOIL OR COMPACTED BACKFILL.

TITLE
 60' FREE STANDING, 1810
 18" TRIANGULAR STEEL TOWER
 FOUNDATION

SIZE A	DWG NO 1301	SHT. # 2
DRAWN BY: DOW		DATE 6/18/2005