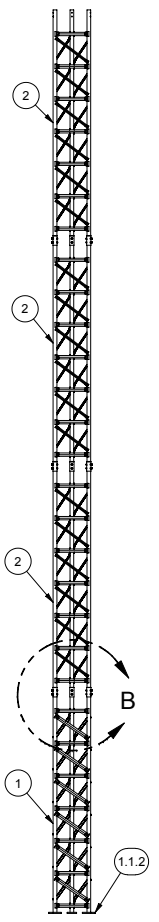
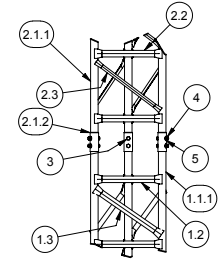


90 mph/78 mph + 1/2" radial ice (3 second gust) per OBC and IBC				
	CaAa	Flat Plate Area	Weight	Elevation
No Ice	12.5 sq ft	6.94 sq ft	200 lbs	40.0 ft
1/2" Ice	17.0 sq ft	9.44 sq ft	300 lbs	40.0 ft
(1)-7/8" coax Elevation 0 ft to 40 ft				

70 mph/61 mph + 1/2" radial ice (Fastest MPH) per EIA-222-F				
	CaAa	Flat Plate Area	Weight	Elevation
No Ice	12.0 sq ft	6.67 sq ft	200 lbs	40.0 ft
1/2" Ice	15.5 sq ft	8.61 sq ft	300 lbs	40.0 ft
(1)-7/8" coax Elevation 0 ft to 40 ft				



FOUNDATION REACTIONS
 TOTAL MOMENT: 25.2 FT-KIPS
 TOTAL SHEAR: 1 KIPS
 TOTAL DOWNLOAD: 1 KIPS



DETAIL B

ITEM	QTY	PART #	DESCRIPTION
5	18		A325, 1/2" WASHER
4	18		A325, 1/2-13 UNC HEX NUT
3	18		A325, 1/2-13 UNC x 3 LG.
2.3	18	1196	0.75 x 0.75 x 3/16 A36 ANGLE - DIAGONAL
2.2	21	1195	1.25 x 1.25 x 3/16 A36 ANGLE - HORIZONTAL
2.1.2	1	1192	2 1/4" O.D. x 1/8 WALL x 0'-5, A-513 (50 kpsi MIN YIELD)
2.1.1	1	1191	2" O.D. x 10 GA. (.134) x 10'-0, A-513 (50 kpsi MIN YIELD)
2.1	3	1193	LEG WELDMENT
2	3	1194	1810-A4 MID-SECTION
1.3	18	1197	1.25 x 1.25 x 3/16 A36 ANGLE - DIAGONAL
1.2	21	1195	1.25 x 1.25 x 3/16 A36 ANGLE - HORIZONTAL
1.1.2	1	1199	FOOT PAD
1.1.1	1	1198	2" O.D. x 10 GA. (.134) x 9'-11 11/16, A-513 (50 kpsi MIN YIELD)
1.1	3	1200	LEG WELDMENT
1	1	1201	1810-F4G TOWER BASE

REV	DATE	DESCRIPTION
A	2/12/2005	REDRAWN

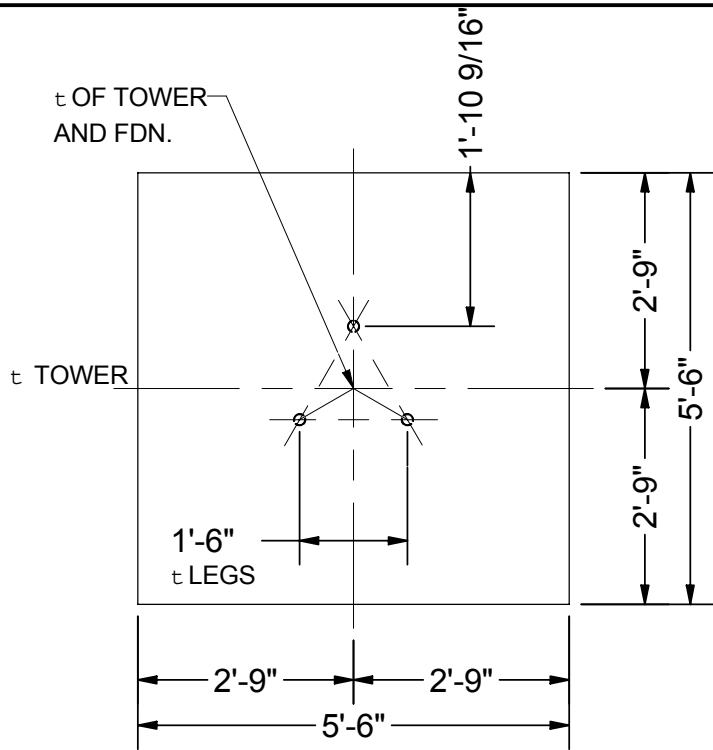
REVISION HISTORY
 AMERICAN TOWER COMPANY
 ISO 9001-2000
 P.O. Box 29 Shelby, Ohio 44875
 info@amertower.com
 Telephone (419) 347-1185 www.amertower.com Fax (419) 347-1654 Since 1953

TITLE
 40' FREE STANDING 1810
 18" TRIANGULAR STEEL TOWER

SIZE B	DWG NO 1064	SHT. # 1
-----------	----------------	-------------

DRAWN BY: DOW DATE 1/22/2005

Parts List



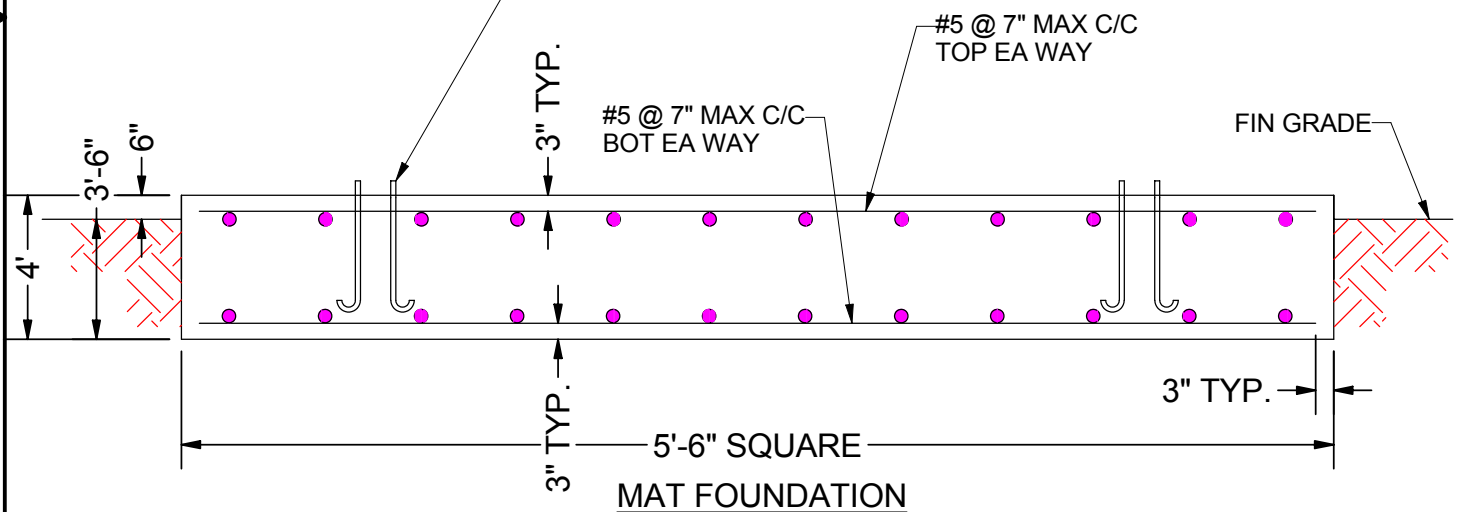
PLAN

NOTES:

1. ALL CONCRETE SHALL HAVE A MINIMUM COMPRESSIVE STRENGTH OF 3000 PSI @ 28 DAYS
2. REINFORCING STEEL SHALL CONFORM TO THE REQUIREMENTS OF ASTM A615 (GRADE 60).
3. TOTAL CONCRETE = 4.5 CUBIC YARDS.
4. FOUNDATION DESIGN BASED UPON ASSUMED SOIL PARAMETERS AS FOLLOWS:

ALLOW BEARING PRESSURE: 2000 PSF
 UNIT SOIL WEIGHT: 100 PCF
 WATER AND ROCK LOCATED BELOW FOOTING

ANCHOR BOLTS BY AMERICAN TOWER,
 1/2" ϕ x 3'-6" MIN EMBEDMENT INTO CONCRETE.
 180° END HOOK PER ACI. SEE DRAWINGS BY
 AMERICAN TOWER FOR ANCHOR BOLT ORIENTATION



FOOTING MUST BEAR ON UNDISTURBED SOIL OR COMPACTED BACKFILL.

AMERICAN TOWER COMPANY ISO 9001-2000 P.O. Box 29 Shelby, Ohio 44875 info@amertower.com www.amertower.com Since 1953		
Telephone (419) 347-1185	Fax (419) 347-1654	
TITLE 40' FREE STANDING 1810 18" TRIANGULAR STEEL TOWER FOUNDATION		
SIZE A	DWG NO 1064	SHT. # 2
DRAWN BY: DOW		DATE 1/22/2005