

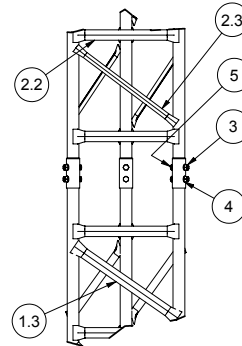
90 mph/78 mph + 1/2" radial ice (3 second gust) per OBC and IBC				
	CAaA	Flat Plate Area	Weight	Elevation
No ice	50 sq ft	28 sq ft	200 lbs	30.0 ft
1/2" ice	66 sq ft	37 sq ft	400 lbs	30.0 ft
(1)-1/2" coax Elevation 0 ft to 30 ft				

70 mph/61 mph + 1/2" radial ice (Fastest MPH) per EIA-222-F				
	CAaA	Flat Plate Area	Weight	Elevation
No ice	50 sq ft	28 sq ft	200 lbs	30.0 ft
1/2" ice	65 sq ft	36 sq ft	400 lbs	30.0 ft
(1)-1/2" coax Elevation 0 ft to 30 ft				

INTERIOR BRACING  
- NOT REQUIRED -

FOUNDATION REACTIONS  
TOTAL MOMENT: 30.7 FT-KIPS  
TOTAL SHEAR: 1 KIPS  
TOTAL DOWNLOAD: 1 KIPS



DETAIL B

5	12		A325, 1/2-13 UNC x 3 LG.
4	12		A325, 1/2" WASHER
3	12		A325, 1/2-13 UNC HEX NUT
2.3	18	1196	0.75 x 0.75 x 3/16 A36 ANGLE - DIAGONAL
2.2	21	1195	1.25 x 1.25 x 3/16 A36 ANGLE - HORIZONTAL
2.1.2	1	1192	2 1/4" O.D. x 1/8 WALL x 0°-5, A-513 (50 kpsi MIN YIELD)
2.1.1	1	1191	2" O.D. x 10 GA. (.134) x 10°-0, A-513 (50 kpsi MIN YIELD)
2.1	3	1193	LEG WELDMENT
2	2	1194	1810-A4 MID-SECTION
1.3	18	1197	1.25 x 1.25 x 3/16 A36 ANGLE - DIAGONAL
1.2	21	1195	1.25 x 1.25 x 3/16 A36 ANGLE - HORIZONTAL
1.1.2	1	1199	FOOT PAD
1.1.1	1	1198	2" O.D. x 10 GA. (.134) x 9°-11 11/16, A-513 (50 kpsi MIN YIELD)
1.1	3	1200	LEG WELDMENT
1	1	1201	1810-F4G TOWER BASE
ITEM	QTY	PART NUMBER	DESCRIPTION

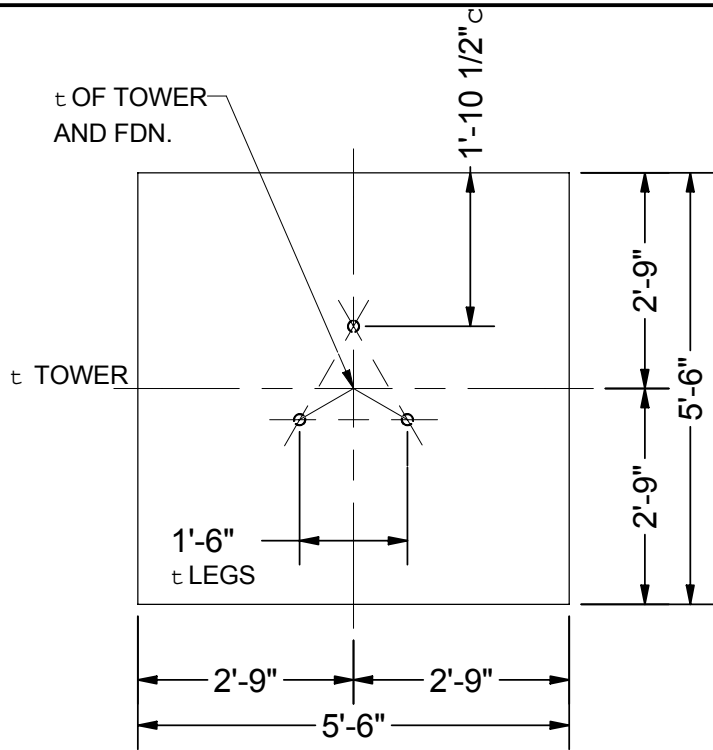
Parts List

AMERICAN TOWER COMPANY

ISO 9001-2000  
P.O. Box 29 Shelby, Ohio 44875  
info@amertower.com  
Telephone (419) 347-1185 www.amertower.com Since 1953 Fax (419) 347-1654

TITLE  
30' FREE STANDING, 1810  
18" TRIANGULAR STEEL TOWER

SIZE	DWG NO	SHT. #
B	1302	1
DRAWN BY:	DOW	DATE 6/18/2005

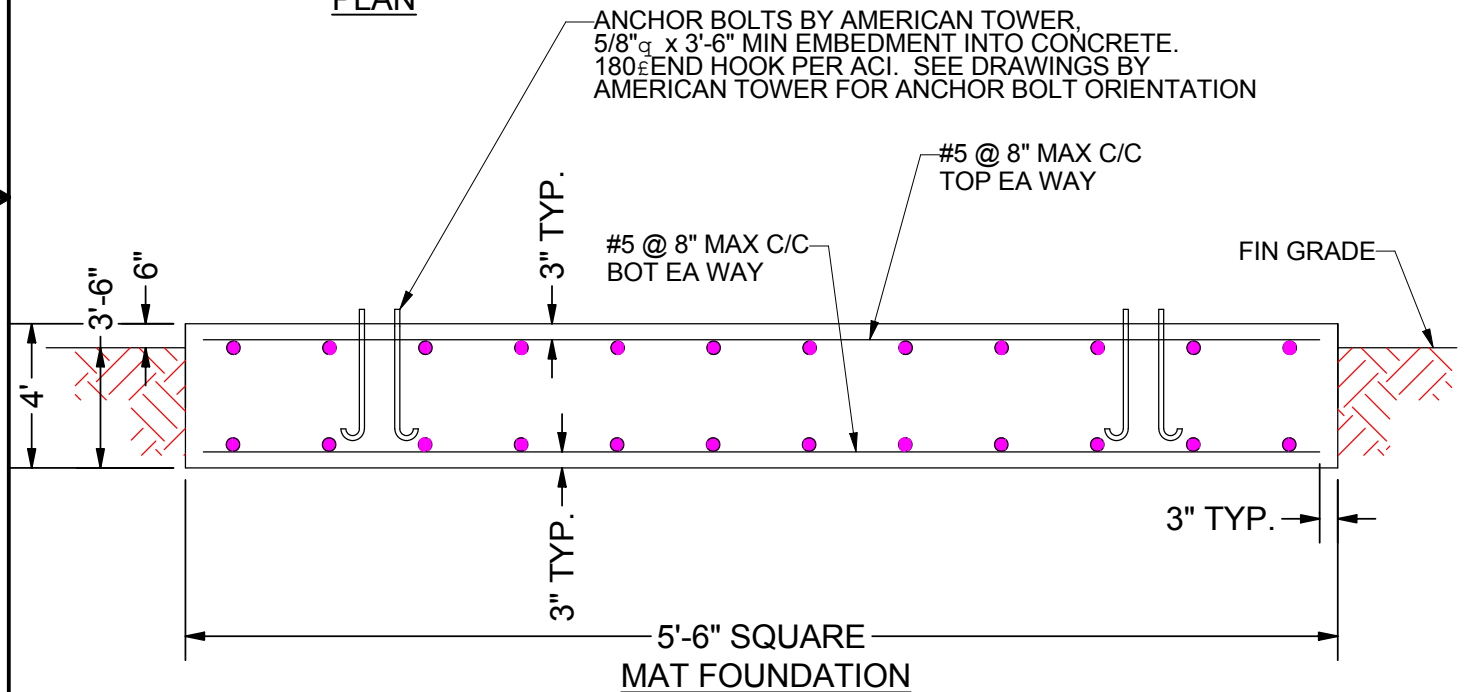


**NOTES:**

1. ALL CONCRETE SHALL HAVE A MINIMUM COMPRESSIVE STRENGTH OF 3000 PSI @ 28 DAYS
2. REINFORCING STEEL SHALL CONFORM TO THE REQUIREMENTS OF ASTM A615 (GRADE 60).
3. TOTAL CONCRETE = 4.5 CUBIC YARDS.
4. FOUNDATION DESIGN BASED UPON ASSUMED SOIL PARAMETERS AS FOLLOWS:

ALLOW BEARING PRESSURE: 2000 PSF  
 UNIT SOIL WEIGHT: 100 PCF  
 WATER AND ROCK LOCATED BELOW FOOTING. NO ALLOWANCE HAS BEEN MADE FOR DELETERIOUS SOIL, PEAT, ETC. IN EXCAVATION

ANCHOR BOLTS BY AMERICAN TOWER,  
 5/8" dia x 3'-6" MIN EMBEDMENT INTO CONCRETE.  
 180° END HOOK PER ACI. SEE DRAWINGS BY AMERICAN TOWER FOR ANCHOR BOLT ORIENTATION



**FOOTING MUST BEAR ON UNDISTURBED SOIL OR COMPACTED BACKFILL.**

<b>AMERICAN TOWER COMPANY</b> ISO 9001-2000 P.O. Box 29 Shelby, Ohio 44875 info@amertower.com www.amertower.com Since 1953			
Telephone	(419) 347-1185	Fax	(419) 347-1654
<b>TITLE</b> 30' FREE STANDING, 1810 18" TRIANGULAR STEEL TOWER FOUNDATION			
SIZE	A	DWG NO	1302
SHT. #	2		
DRAWN BY:		DOW	DATE 6/18/2005