

90 mph/78 mph + 1/2" radial ice (3 second gust) per OBC and IBC			
No. ice	Flat Plate Area	Weight	Elevation
158 sq ft	88 sq ft	200 lbs	10.0 ft
216 sq ft	120 sq ft	400 lbs	10.0 ft
(1)-1/2" coax Elevation 0 ft to 10 ft			
70 mph/61 mph + 1/2" radial ice (Fastest MPH) per EIA-222-F			
No. ice	Flat Plate Area	Weight	Elevation
142 sq ft	79 sq ft	200 lbs	10.0 ft
193 sq ft	107 sq ft	400 lbs	10.0 ft
(1)-1/2" coax Elevation 0 ft to 10 ft			

INTERIOR BRACING
- NOT REQUIRED -

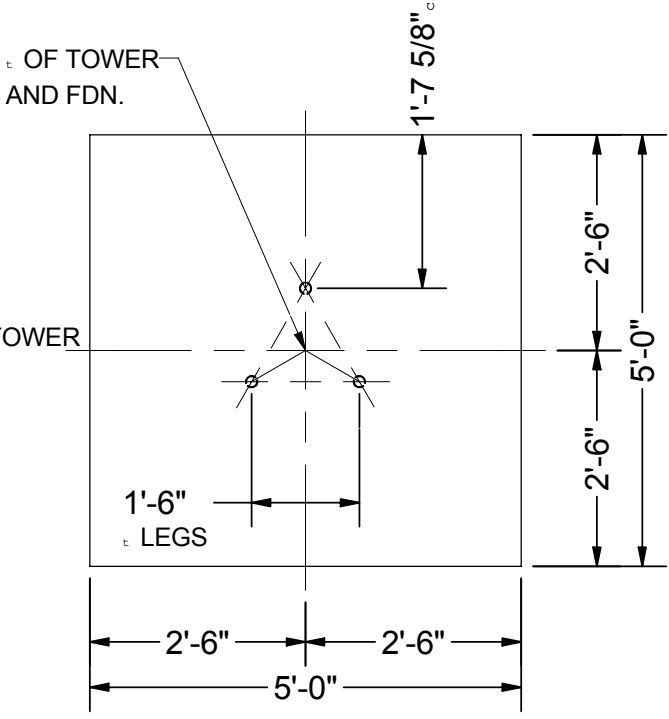
FOUNDATION REACTIONS
TOTAL MOMENT: 23.7 FT-KIPS
TOTAL SHEAR: 2 KIPS
TOTAL DOWNLOAD: 1 KIPS

ITEM	QTY	PART NUMBER	DESCRIPTION
1.3	18	1197	1.25 x 1.25 x 3/16 A36 ANGLE - DIAGONAL
1.2	21	1195	1.25 x 1.25 x 3/16 A36 ANGLE - HORIZONTAL
1.1.2	1	1199	FOOT PAD
1.1.1	1	1198	2" O.D. x 10 GA. (.134) x 9'-11 11/16" A-513 (60 Kpsi MIN YIELD)
1.1	3	1200	LEG WELDMENT
1	1	1201	1810-FAG TOWER BASE
ITEM	QTY	PART NUMBER	DESCRIPTION

Part 16 List

AMERICAN TOWER COMPANY 10501-12000 Shelby, Ohio 44875 Telephone (419) 347-1185 Fax (419) 347-1654 www.amertower.com	Since 1953
--	------------

TITLE 10' FREE STANDING, 1810 18" TRIANGULAR STEEL TOWER
SIZE B
DWG NO T304
SH.T.# 1
DRAWN BY: DOW
DATE 6/18/2005



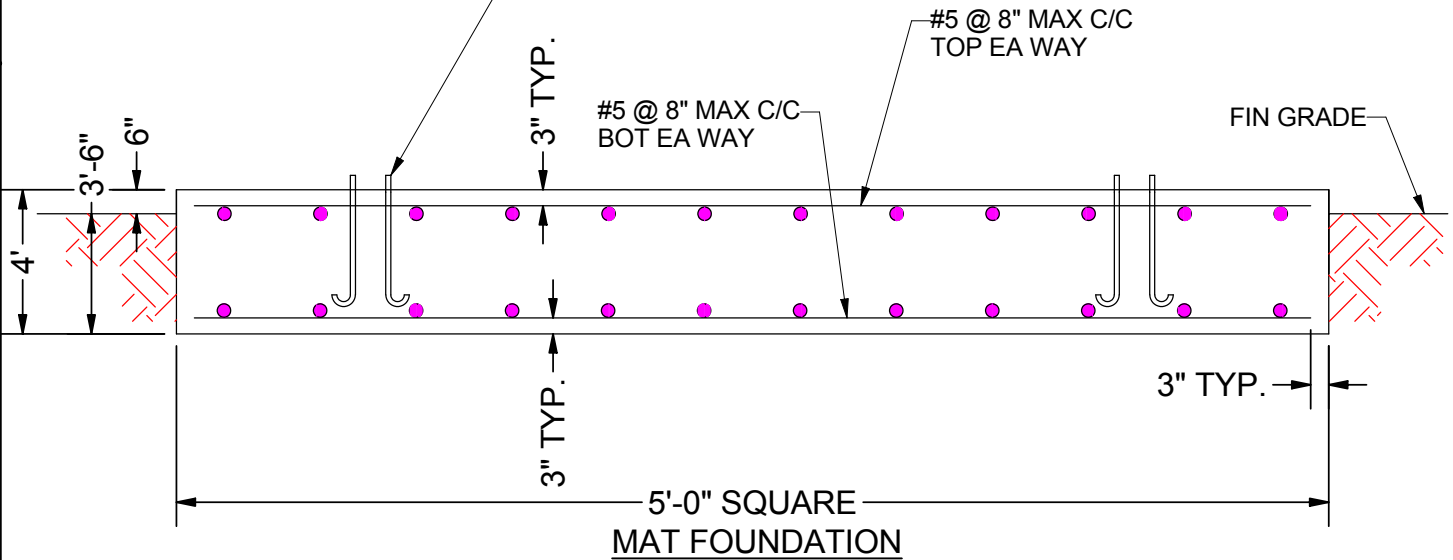
PLAN

NOTES:

1. ALL CONCRETE SHALL HAVE A MINIMUM COMPRESSIVE STRENGTH OF 3000 PSI @ 28 DAYS
2. REINFORCING STEEL SHALL CONFORM TO THE REQUIREMENTS OF ASTM A615 (GRADE 60).
3. TOTAL CONCRETE = 3.7 CUBIC YARDS.
4. FOUNDATION DESIGN BASED UPON ASSUMED SOIL PARAMETERS AS FOLLOWS:

ALLOW BEARING PRESSURE: 2000 PSF
UNIT SOIL WEIGHT: 100 PCF
WATER AND ROCK LOCATED BELOW FOOTING. NO ALLOWANCE HAS BEEN MADE FOR DELETERIOUS SOIL, PEAT, ETC. IN EXCAVATION

ANCHOR BOLTS BY AMERICAN TOWER, 5/8" x 3'-6" MIN EMBEDMENT INTO CONCRETE. 180° END HOOK PER ACI. SEE DRAWINGS BY AMERICAN TOWER FOR ANCHOR BOLT ORIENTATION



FOOTING MUST BEAR ON UNDISTURBED SOIL OR COMPACTED BACKFILL.

AMERICAN TOWER COMPANY ISO 9001-2000 P.O. Box 29 Shelby, Ohio 44875 info@amertower.com www.amertower.com Since 1953			
Telephone	(419) 347-1185	Fax	(419) 347-1654
TITLE 10' FREE STANDING, 1810 18" TRIANGULAR STEEL TOWER FOUNDATION			
SIZE	DWG NO	SHT. #	
A	1304	2	
DRAWN BY:		DOW	DATE 6/18/2005

