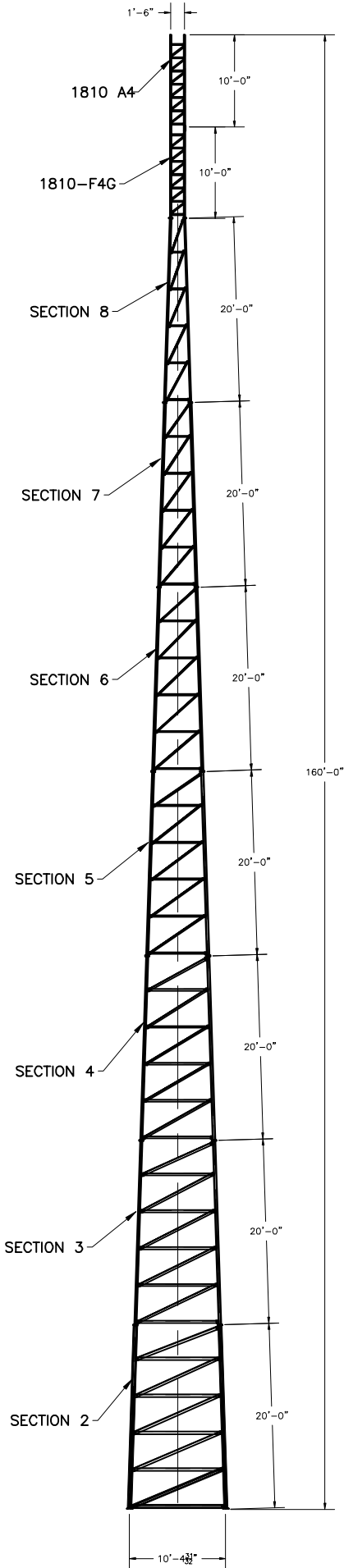


ASTM									
LEGS	3.5" x 0.300"	2.875" x 0.276"	2.875" x 0.203"	2.375" x 0.218"	1.9" x 0.145"	2.0" x 10 GA	*		
DIAGONALS	L3 1/2x3 1/2x1/4	L3 x 3 x 3/16	L2 1/2x2 1/2x3/16	L2 x 2 x 1/8	L1 3/4 x 1 3/4 x 1/8	L3/4 x 3/4 x 1/8	A36		
GIRTS	L3 1/2x3 1/2x1/4	L3 x 3 x 3/16	L2 1/2x2 1/2x3/16	L2 x 2 x 1/8	L1 3/4 x 1 3/4 x 1/8	L1 1/4x1 1/4x1/8	GRADE 5		
BRACE BOLTS	(1)-3/4"	(4)-3/4"	(1)-5/8"	(4)-5/8"	(4)-1/2"	(2)-1/2"	-SHOP WELDED-		
SPICE BOLTS	(1)-3/4"	(4)-3/4"	(1)-5/8"	(4)-5/8"	(4)-1/2"	(2)-1/2"			
ANCHOR BOLTS	(4)-1"	(4)-1" (C1018 THREADED ROD)	(4)-5/8"	(4)-5/8"	(4)-1/2"	(2)-1/2"			

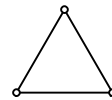


According to ANSI/EIA-222-F 1996

90 mph/78 mph + 1/2" radial ice w/ (3 second gust) per OBC AND IBC				
	CaAa	Flat Plate Area	Weight	Elevation
No Ice	29.5 sq ft	16.39 sq ft	200 lbs	160 ft
1/2" Ice	36.0 sq ft	20.00 sq ft	350 lbs	160 ft
No Ice	50.0 sq ft	27.78 sq ft	350 lbs	160 ft to 130 ft
1/2" Ice	60.5 sq ft	33.61 sq ft	600 lbs	160 ft to 130 ft
(1)-7/8" coax Elevation 0 ft to 160 ft				
Climbing Ladder Elevation 0 ft to 140 ft				

70 mph/61 mph + 1/2" radial ice (Fastest MPH) per EIA-222-F				
	CaAa	Flat Plate Area	Weight	Elevation
No Ice	30.0 sq ft	16.67 sq ft	200 lbs	160 ft
1/2" Ice	36.5 sq ft	20.28 sq ft	350 lbs	160 ft
No Ice	51.5 sq ft	28.61 sq ft	350 lbs	160 ft to 130 ft
1/2" Ice	61.5 sq ft	34.17 sq ft	600 lbs	160 ft to 130 ft
(1)-7/8" coax Elevation 0 ft to 160 ft				
Climbing Ladder Elevation 0 ft to 140 ft				

\* PIPE LEGS 42 KSI MIN YIELD  
10 GA TUBE LEGS 30 KSI MIN YIELD



INTERIOR BRACING  
- NOT REQUIRED -

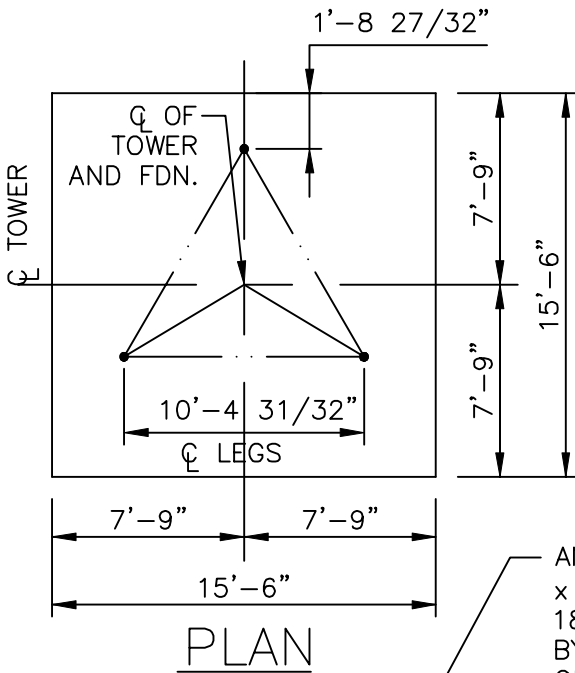
FOUNDATION REACTIONS  
TOTAL MOMENT: 618  
TOTAL SHEAR: 8 KIPS  
TOTAL DOWNLOAD: 14 KIPS

AMERICAN TOWER COMPANY ISO 9001-2000 P.O. Box 29 Shelby, Ohio 44875 www.amertower.com info@amertower.com	
Telephone (419) 347-1185	Fax (419) 347-1654
160' STANDARD	
BY: DOW	DATE: 12/21/02
DWG NO. 1058	

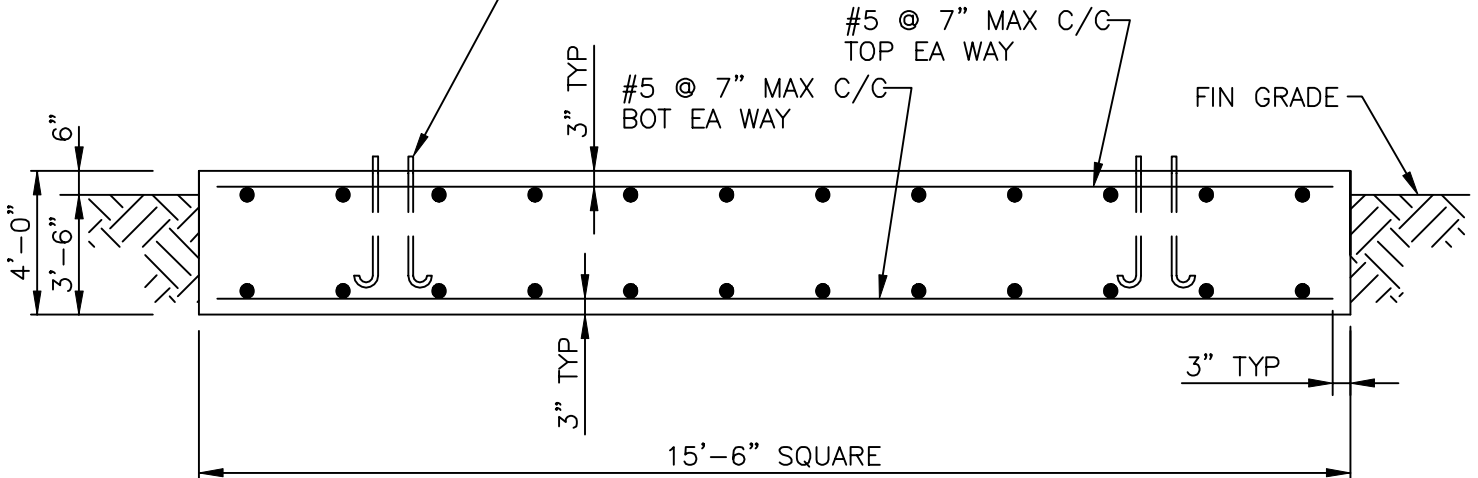
**NOTES:**

1. ALL CONCRETE SHALL HAVE A MINIMUM COMPRESSIVE STRENGTH OF 3000 PSI @ 28 DAYS.
2. REINFORCING STEEL SHALL CONFORM TO THE REQUIREMENTS OF ASTM A615 (GRADE 60).
3. TOTAL CONCRETE = 35.6 CUBIC YARDS.
4. FOUNDATION DESIGN BASED UPON THE FOLLOWING:

ALLOW BEARING PRESSURE: 2000 PSF  
 UNIT WEIGHT: 100 PCF  
 WATER AND ROCK LOCATED BELOW FOOTING



ANCHOR BOLTS BY AMERICAN TOWER, 1"Ø x 3'-6" MIN EMBEDMENT INTO CONCRETE. 180° END HOOK PER ACI. SEE DRAWINGS BY AMERICAN TOWER FOR ANCHOR BOLT ORIENTATION.



**MAT FOUNDATION**

FOOTING MUST BEAR ON UNDISTURBED SOIL OR COMPACTED BACKFILL.

<b>AMERICAN TOWER COMPANY</b> ISO 9001-2000 P.O. Box 29 Shelby, Ohio 44875 www.amertower.com info@amertower.com Telephone (419)347-1185 Since 1953 Fax (419) 347-1654	
160' STANDARD FOUNDATION	
BY: DOW	DATE: 12/21/02
DWG NO. 1058 A	